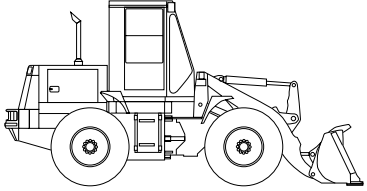
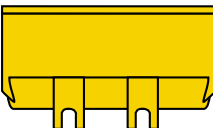
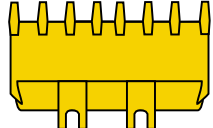
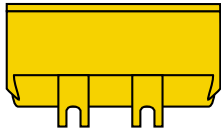


507^L-2 BUCKET DATA

			General Purpose		Material Handling
			With Bolt-on Cutting Edge	With Teeth	With Bolt-on Cutting Edge
					
Capacity	Heaped	yd ³ (m ³)	1.7 (1.3)	1.6 (1.2)	2.1 (1.6)
	Struck	yd ³ (m ³)	1.4 (1.1)	1.3 (1.0)	1.8 (1.4)
Maximum dumping clearance		ft-in (mm)	8'7 ³ / ₈ " (2555)	8'7 ⁷ / ₈ " (2640)	8'5 ⁷ / ₈ " (2575)
Dumping reach (to front of bucket edge or tooth)		ft-in (mm)	3'3 ³ / ₄ " (1010)	3'6 ⁵ / ₁₆ " (1075)	3'6 ⁵ / ₁₆ " (1075)
Bucket hinge pin height		ft-in (mm)	11'1 ¹¹ / ₁₆ " (3395)	11'1 ¹¹ / ₁₆ " (3395)	11'1 ¹¹ / ₁₆ " (3395)
Digging depth		ft-in (mm)	2 ¹⁵ / ₁₆ " (75)	3 ⁹ / ₁₆ " (90)	2 ¹⁵ / ₁₆ " (75)
Breakout force		lb (kg)	13,700 (6200)	15,000 (6800)	12,300 (5600)
Bucket tilt-back angle	at ground level		42°	42°	42°
	at carry position		50°	50°	50°
Overall	Length	ft-in (mm)	20'1 ¹ / ₂ " (6132)	20'2 ⁹ / ₁₆ " (6159)	20'3 ¹¹ / ₁₆ " (6188)
	Height	ft-in (mm)	10'1 ⁷ / ₁₆ " (3085)	10'1 ⁷ / ₁₆ " (3085)	10'1 ⁷ / ₁₆ " (3085)
Width (outside tire)		ft-in (mm)	7'2 ⁷ / ₁₆ " (2195)	7'2 ⁷ / ₁₆ " (2195)	7'2 ⁷ / ₁₆ " (2195)
Width (outside bucket)		ft-in (mm)	7'8 ¹ / ₂ " (2350)	7'8 ¹ / ₂ " (2350)	8'1 ² / ₂ " (2450)
Wheel base		ft-in (mm)	8'6 ³ / ₈ " (2600)	8'4 ³ / ₈ " (2550)	8'4 ³ / ₈ " (2550)
Minimum turning radius	at outside bucket	ft-in (mm)	16'9 ⁹ / ₁₆ " (5120)	16'10 ³ / ₄ " (5150)	16'10 ⁹ / ₁₆ " (5145)
	at center of outside tire	ft-in (mm)	14'8 ⁷ / ₁₆ " (4480)	14'5 ¹³ / ₁₆ " (4415)	14'5 ¹³ / ₁₆ " (4415)
Minimum ground clearance		ft-in (mm)	1'2 ³ / ₄ " (375)	1'2 ³ / ₄ " (375)	1'2 ³ / ₄ " (375)
Full articulation angle		degree	40°	40°	40°
Operating weight (with ROPS Cab)		lb (kg)	16,380 (7430)	15,720 (7130)	15,900 (7210)
Static tipping load (with ROPS Cab)	Straight	lb (kg)	13,635 (6181)	12,930 (5861)	12,710 (5761)
	Full turn	lb (kg)	11,711 (5309)	11,050 (5009)	10,830 (4909)

Measured in accordance with SAE J732C & J742 The weight and load figure include Enclosed ROPS Cab. 15.5-25-10PR (L-2) tires. Full fuel tank, operator, and optional counterweight.

Materials and specifications are subject to change without notice and without obligation on the part of the manufacturer. The specifications supplied, while believed to be completely reliable, are not to be taken as warranty for which we assume legal responsibility.

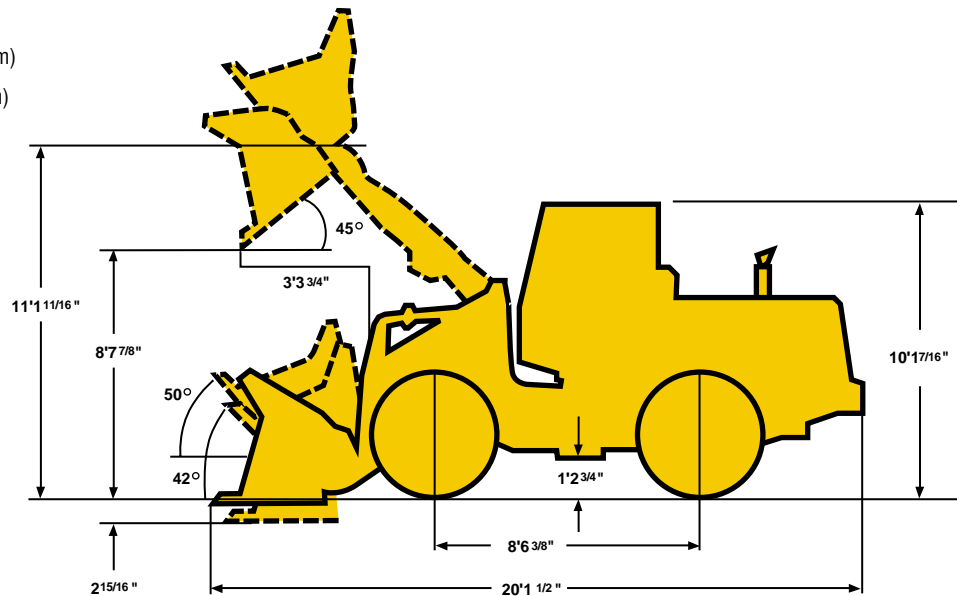
50Z^{IV}-2 OPERATING SPECIFICATIONS

WEIGHTS AND DIMENSIONS (SUPPLEMENTAL DATA)

		Operating Weight	Tipping Load			Overall Width (Outside Tire)	Vertical Dimensions	Overall Length
			Straight	Full Turn				
ROPS Canopy (Instead of ROPS Cab)	lb (kg)	-530 (-240)	-460 (-210)	-400 (-180)	in (mm)		-2" (-50)	
Remove ROPS Canopy and Cab (for transport only)	lb (kg)	-995 (-450)			in (mm)		-6 ¹ / ₈ " (-155)	
Counterweight, Removal (Instead of rear tire ballast)	lb (kg)	-640 (+-290)	-1400 (-631)	-1240 (-559)	in (mm)			-4" (-100)
Tires:								
17.5 x 25 (L-2) (L-3)	lb (kg)	+200 (+90)	+130 (+60)	+110 (+50)	in (mm)	+1 ¹ / ₈ " (+30)	+1 ¹ / ₈ " (+30)	-1 ¹ / ₈ " (-30)
Air conditioner	lb (kg)	+150 (+70)	+130 (+60)	+110 (+50)				
Belly Guard (rear frame)	lb (kg)	+175 (+80)	+90 (+40)	+160 (+75)				

Base Tire 15.5-25-10PR (L-2)

Tread 5'11" (1820mm)
 Width (outside tire) 7'2⁷/₁₆" (2195mm)
 Width (outside bucket) 7'8¹/₂" (2350mm)
 Equipped with GSC bucket 1.7 yd³ with bolt on cutting edge
 15.5-25-10PR (L-2) Tire and ROPS Cab



50Z^{IV}-2 OPERATING SPECIFICATIONS

ENGINE

Make/Model/Fuel Type	Cummins/B3.9C/Diesel
Type	4-cycle, watercooled, direct injection
Net flywheel horsepower	90HP/2350 RPM
Max torque	246 ft/lb (34 kgm)/1600 RPM
Number of cylinders	4
Bore and stroke	4.02" x 4.72" (102mm x 120mm)
Total displacement	239.3 in ³ (3922 cm ³)
Alternator	DC24V-1200w (50amp)
Starting motor	24V-4.5kw (6HP)
Battery	Two 12V-65AH (24V System)
Governor	All-speed, mechanical type

TORQUE CONVERTER AND TRANSMISSION

Torque converter	3 elements, single stage
Torque stall ratio	3.02:1
Main clutches	Wet hydraulic, multi-disk type
Cooling method	Forced circulation type
Transmission	Full power shift, 3 forward, 3 reverse
Forward & reverse (maximum speed)	1st: 4.8 MPH (7.8 km/hr) 2nd: 9.4 MPH (15.2 km/hr) 3rd: 21.1 MPH (34.0 km/hr)

SERVICE REFILL CAPACITY

LOCATION	CAPACITY:	Gallons	Liters
Engine (coolant)		4.75	(18)
Fuel tank (diesel fuel)		31.75	(120)
Engine oil (oil pan)		3.00	(11)
Front axle (gear oil)		4.75	(18)
Rear axle (gear oil)		4.75	(18)
Torque converter and transmission (engine oil)		5.25	(20)
Hydraulic system including tank (hydraulic oil)		19.75	(75)
Brake oil tank (engine oil)		0.50	(2)

HYDRAULIC AND STEERING SYSTEM

Steering type	Articulated frame steering	
Steering mechanism	Hydraulic power steering (Orbitrol)	
Lift (boom) cylinder	Two (2) double-acting piston type: 4" x 23 ³ / ₈ " (100mm x 593mm)	
Tilt (bucket) cylinder	One (1) double-acting piston type: 4" x 18 ¹ / ₈ " (100mm x 462mm)	
Steering cylinder	Two (2) double-acting piston type: 2 ³ / ₈ " x 13 ³ / ₈ " (60mm x 340mm)	
Main oil pump	Gear type: 27 GPM/1000psi @2350 RPM (102 LPM/70kg/cm ² @2350 RPM)	
Relief valve set pressure	Loading	3000 psi (210 kg/cm ²)
	Steering	2490 psi (175 kg/cm ²)
HYDRAULIC CYCLE TIME*		
Lifting time (at full load)	5.4 sec.	
Lowering time (empty)	2.8 sec.	
Bucket dumping time	1.0 sec.	
TOTAL	9.2 sec.	

* Measured in accordance with SAE J732C

AXLE SYSTEM

Drive system	4-wheel drive	
Front and rear axle	Semi-floating type	
Tires	Standard	15.5 x 25-10PR (L-2)
	Optional	15.5 x 25-12PR (L-3)
		17.5 x 25 x 12 (L-2) 17.5 x 25 x 12 (L-3)
Reduction and differential gear	Spiral bevel/gear, 1 stage reduction	
Final reduction gear	Internal planetary gear (5.44:1) inboard mounted	
Oscillation angle	±12°/ 1'2 ¹⁵ / ₁₆ " (380mm)	

BRAKE SYSTEM

Service brakes	4-wheel fully hydraulic type wet disc brakes with independent systems for front and rear wheels with inching system (inboard mounted)
Parking/Emergency brake	Mechanical, located on front drive shaft.

50Z^{IV-2} EQUIPMENT DATA

STANDARD EQUIPMENT

<p>Air Cleaner (Double Element Donaldson)</p> <p>Alarms (Audible): Brake Oil Level Brake Oil Pressure Engine Oil Pressure Parking Brake with T/M Engaged</p> <p>Alarms (Visual): Air Filter Battery Discharge Brake Oil Level Brake Oil Pressure Engine Oil Pressure Engine Coolant Temperature Converter Oil Temperature Parking Brake</p> <p>Alternator (50 amp) AM/FM Cassette Radio Batteries: 12V-65AH (2 units)</p>	<p>Brake (Parking) Mechanical Drum type</p> <p>Brakes (Service) Oil Actuation Enclosed Wet Disc Dual System</p> <p>Bucket Control Lever (Single) Bucket Leveler Boom Kickout Cold Start Aid Drawbar Electrical System (24 volt) Engine Water Expansion Tank Fan (Blower) Fenders (Front and Rear) Gauges: Fuel Level Hour Meter Hydraulic Oil Level Sight Speedometer</p>	<p>Heater/Pressurizer (40,000 BTU)</p> <p>Hoodsides (Hinged)</p> <p>Horn (Electric)</p> <p>Indicators: High Beam Transmission Declutch Working Light</p> <p>Linkage (Z-type, Sealed)</p> <p>Lights: 4 Front 2 Rear 2 Stop/Tail 2 Backup</p> <p>Muffler Neutral Safety Start Operator's Manual Box Radiator: Heavy Duty Plate Fin Type Radiator Grille, Hinged</p>	<p>Reverse Alarm</p> <p>ROPS Cab: Enclosed cab with sound suppression, front lights, front and rear wipers and washers, one rear and two side mirrors, tinted glass, and sliding side windows</p> <p>ROPS Rear Working Lights Safety Articulation Locking Bar Seat (deluxe, adjustable suspension with headrest and adjustable armrests) Seat Belt, 3" wide Torque Proportioning Differentials Transmission Declutch Selector Switch Vandalism Protection</p>
---	---	---	---

OPTIONAL EQUIPMENT

<p>Air Conditioner (with heater & defroster) (R134a refrigerant)</p> <p>Belly Guard</p> <p>Bolt-on Counterweight</p> <p>Counterweight</p> <p>Cushion Dump Valve</p> <p>Dual Hydraulic Controls</p>	<p>High-Lift Arms</p> <p>Hydraulic System three (3) spool valve, control lever, linkage & lines</p> <p>Precleaner</p> <p>Quick Coupler and Attachments</p>	<p>ROPS Canopy</p> <p>Ride Control</p> <p>Seat, Air Ride</p> <p>Tires: 15.5-25-12PR (L-3), 17.5-25-12PR (L-2), (L-3)</p> <p>Tire Rims, 3-Piece</p>	<p>Turn Signal With Four-way Flasher</p> <p>Vandalism Cover For Operation Panel</p>
--	--	--	---