

 **Kawasaki**



60 K-Lift

KAWASAKI K-LIFT

Kawasaki offers the 60 K-Lift specifically for the auto salvage industry. This loader represents the highest quality equipment backed by a comprehensive support system to ensure your investment will continue to produce returns for years to come.

SUMMARY OF FEATURES

- Sellick™ 2-stage mast provides excellent visibility
- 72" Class IV Hook carriage, standard
- 84" and 72" shaft-mount stationery carriage, optional
- Higher ground speed over standard forklift configurations
- Operator compartment designed for operator comfort
- Extremely durable, components designed for long life
- Emissions-compliant, fuel-efficient Cummins diesel engine, 109 HP
- Single lever hydraulic control for easy operation
- Automatic powershift transmission with three forward and reverse speeds
- Four-wheeled dual circuit sealed wet disc brakes for reliability and long service life
- Torque-proportioning differentials for improved traction and longer tire life
- Easy access to drains, filters and fittings for easy field maintenance



FOCUSED POWER AND PERFORMANCE!

Kawasaki K-Lift is a high productivity articulated forklift. Featuring Cummins diesel engines, certified ROPS cabs and a host of other features that provide high operating efficiency, ease of maintenance and safety, the Kawasaki 60 K-Lift is engineered to handle most Salvage Pool and dismantler applications.

WORLD-CLASS ENGINES

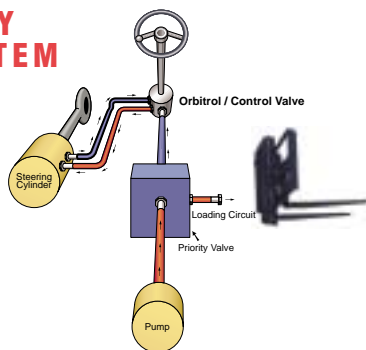
- 109 HP emissions-compliant Cummins B5.9C diesel
- Compliant with tough new emissions standards for 2001
- Totally reengineered for longer service life
- Reliable and fuel efficient
- Extensive distribution system
- 24 volt battery system for reserve power





HIGH EFFICIENCY HYDRAULIC SYSTEM

- Dry, reliable
- Cast iron gear pump
- Energy efficient steering circuit supplements main
- Large oil reservoir keeps oil cooler



TRANSMISSION

- Three-speed transmission with powershift
- Single lever control
- Transmission declutch selector switch activates left brake pedal declutch



AXLES

- Torque-proportioning differentials offer increased traction in sand and mud while extending tire life
- 17.5 x 25 x 16PR (L-2) tires, standard
- 4-wheel drive
- Oscillation range $\pm 12^\circ$ (total 24°)



BRAKES

- Four-wheel, dual-circuit wet disc brakes
- High capacity
- Long life
- Easy inspection and service

STRONG, RUGGED CHANNEL FRAME

- Massive center pins and bearings
- High strength loader tower
- Heavy channel frame

THE COMFORT ZONE

CAB

- Excellent visibility with 2-stage mast
- Certified ROPS
- Isolation-mounted to reduce vibration
- Doors latch back
- Side windows slide down
- Wrap-around tinted windshields for excellent visibility
- Front and rear wipers and washers
- AM/FM cassette radio, standard
- One rearview and two side mirrors
- Reduced sound levels
- Air conditioner available
- Pressurized air control
- Heater, standard

SEAT

- Visibility is increased due to high operator platform
- Seven-way adjustable seat with headrest and adjustable armrests standard
- Heavy-duty suspension
- Lumbar support

CONTROLS

- Single lever hydraulic control standard
- Single, twist-grip transmission lever
- Gauges including speedometer
- All systems monitored with lights and alarms

OPTIONAL FEATURES

- Air ride seat

EASY ACCESS SIMPLIFIES SERVICING



- Hinged grille makes radiator cleaning easy
- Engine side covers open wide for optimum access
- Filters positioned within easy reach
- Easy access to drains, filters and fittings
- Grease fittings are grouped for easy lubrication
- Readily available Fleetguard and Donaldson filters
- Starters and alternators available through Cummins national distribution network
- Ladders on both sides of the machine
- Pressurized air control reduces dust in cab and control boxes



SALVAGE POOL APPLICATIONS

The Kawasaki 60 K-Lift is engineered to handle most Salvage Pool and dismantler applications.

- 14' lift height provides easy placement of vehicles on storage rack systems
- Tight turning radius eliminates 3-point turns.
- Compact size and weight creates low ground pressure preventing road surface damage.
- Larger tires provide increased traction and ground clearance than rough terrain forklifts offer
- High ground speed increases productivity.



SELICK 2-STAGE MASTS

Max. Fork Height	Lowered Height
120"	105"
144"	117"
168"	129"

MAST INSTALLED

Front Axle Weight	lbs	12,700
Rear Axle Weight	lbs	11,300
Gross Vehicle Weight, Unladen	lbs	24,000
Center of Gravity (front wheel CL), Unladen	in	49"
Front Axle Weight, Unladen	lbs	25,100
Rear Axle Weight, Unladen	lbs	3,900
Gross Vehicle Weight, Laden*	lbs	34,000

* Laden capacity consists of 5,000 lb vehicle.

MAST PERFORMANCE

Lift Speed	Idle	ft/sec	1.25
	Full	ft/sec	2.75
Lower Speed	Idle	ft/sec	1
	Full	ft/sec	1.2
Forward Tilt Speed	Idle	sec	3
	Full	sec	2
Rearward Tilt Speed	Idle	sec	3
	Full	sec	2
Tilt Angle	Forward	deg	25
	Rearward	deg	10

GENERAL DATA

Lift Capacity@24" load center	12,000 lb (5443kg)
Lift Capacity@60" load center	5,000 lb (2270kg)
Mast tilt	25° forward, 10° back

HYDRAULIC SYSTEM

Fluid Type	ISO VG 46		
Max. Flow Rate	gal/min	31	
Load Operating Pressure	psi	3000	
Lift Hyd. Relief Setting	Upper	psi	2300
	Lower	psi	0
Fitting Types	JIC/SAE/VIS 30^		

The Kawasaki 60 K-Lift meets or exceeds all ANSI B56.6 safety standards.

Weight and load figures include optional counterweight, enclosed ROPS cab, 17.2 x 25-16PR (L-2) tires and 2-Stage mast, SAS™ Quick Coupler, SAS™ 15' forks.

60 K-Lift OPERATING SPECIFICATIONS

ENGINE

Make/Model/Fuel Type	Cummins/B5.9-C/Diesel
Type	4-cycle, watercooled, direct injection
Net flywheel horsepower	109HP/2400 RPM
Torque	325 ft. lbs./1600 RPM
Number of cylinders	6
Bore and stroke	4.02" x 4.72" (102mm x 120mm)
Total displacement	359 in ³ (5883 cm ³)
Alternator	DC24V – 1200w (50amp)
Starting motor	24V – 4.5kw (6HP)
Battery	12V – 65AH, 2 units
Governor	All-speed, mechanical type

TORQUE CONVERTER AND TRANSMISSION

Torque converter	3 elements, single stage
Torque stall ratio	3.02:1
Main clutches	Wet hydraulic, multi-disk type
Cooling method	Forced circulation type
Transmission	Full power shift, 3 forward, 3 reverse
Forward & reverse (maximum speed)	1st: 4.8 MPH (7.8 km/hr) 2nd: 9.5 MPH (15.3 km/hr) 3rd: 20.1 MPH (32.4 km/hr)

AXLE/BRAKE SYSTEM

Drive system	4-wheel drive	
Front and rear axle	Semi-floating banjo type	
Tires	Standard	17.5 x 25-16PR (L-2)
	Optional	17.5 x 25-16PR (L-3)
Reduction and differential gear	Spiral bevel/gear, 1 stage reduction, torque proportioning type	
Final reduction gear	Internal planetary gear (5.625:1) inboard mounted	
Oscillation angle	±12° / 1'33/8" (390mm)	
Service brakes	4-wheel fully hydraulic wet disk brakes with independent systems for front and rear wheels with inching system (inboard mounted)	
Parking/Emergency brake	Mechanical, located on front drive shaft.	

HYDRAULIC AND STEERING SYSTEM

Steering type	Articulated frame steering
Steering mechanism	Hydraulic power steering (Orbitrol)
Steering cylinder	Two (2) double-acting piston type: 2 3/8" x 16" (60mm x 405mm)
Main oil pump	Gear type: 31 GPM/1000psi @2400 RPM (117 LPM/70kg/cm ² @2400 RPM)
Relief valve set pressure	Loading 3000 psi (210 kg/cm ²) Steering 2490 psi (175 kg/cm ²)

* Measured in accordance with SAE J732C

DIMENSIONS

Overall Width	90" (2285mm)
Height to Top of OHG	124" (2123mm)
Minimum Frame Underclearance.....	1'3 7/8" (403mm)
Mast Underclearance	12" (305mm)
Overall Length (w/out forks).....	17'6" (5307mm)
Load moment (center of front wheel to carriage face).....	35 1/2" (914mm)
Nominal machine weight	20,575 lb (9333kg)
Turning radius.....	15' 2 3/4" (4640mm)

Weight and load figures include optional counterweight, enclosed ROPS cab, 17.2 x 25-16PR (L-2) tires and 2-Stage mast, SAS™ Quick Coupler, SAS™ 15' forks.



The Kawasaki 60 K-Lift meets or exceeds all ANSI B56.6 safety standards.

STANDARD EQUIPMENT

<p>Air Cleaner (Double Element Donaldson)</p> <p>Alarms (Audible): Brake Oil Level Brake Oil Pressure Engine Oil Pressure Parking Brake with T/M engaged</p> <p>Alarms (Visual): Air Filter Battery Discharge Brake Oil Level Brake Oil Pressure Converter Oil Temperature Engine Oil Pressure Engine Coolant Temperature Parking Brake</p> <p>Alternator (50 amp) AM/FM Cassette Radio</p>	<p>Brake (Parking) Mechanical Drum Type</p> <p>Brakes (Service) Oil Actuation, Enclosed Wet Disc Dual System</p> <p>Cold Start Aid Drawbar</p> <p>Electrical System (24 volt) Engine Water Expansion Tank Fan (Blower)</p> <p>Fenders (Front and Rear)</p> <p>Gauges: Fuel Level Hour Meter Hydraulic Oil Level Speedometer</p> <p>Heater/Pressurizer (40,000 BTU)</p>	<p>Hoodsides (Hinged) Horn (Electric)</p> <p>Indicators: High Beam Transmission Declutch Working Light</p> <p>Lights: 4 front 4 Rear 2 Stop/Tail</p> <p>Mast Control Lever Mounting Bracket—Mast Muffler Neutral Safety Start Operator's Manual Box Radiator: Heavy Duty Plate Fin Type Radiator Grille, Hinged Reverse Alarm</p>	<p>ROPS Cab: Enclosed cab with sound suppression, front lights, front and rear wipers and washers, one rear view and two side mirrors, tinted glass, rear lights, and sliding side windows</p> <p>Safety Articulation Locking Bar</p> <p>Seat: Deluxe, adjustable suspension w/headrest and adjustable arm rests</p> <p>Seat Belt, 3" wide</p> <p>Torque Proportioning Differentials</p> <p>Transmission Declutch Selector Switch</p> <p>Vandalism Protection</p>
---	--	---	---

OPTIONAL EQUIPMENT

<p>Air Conditioner (R134a) Refrigerant</p> <p>Belly Guard for Transmission</p>	<p>Converter (12V/5A for use with field installed radio)</p> <p>Counterweight Engine Pre-Cleaner</p>	<p>Hydraulic System, 3 Spool Valve Radiator, Easy Clean ROPS Canopy</p>	<p>Seat, air Ride Turn Signal With Four-Way Flasher</p>
--	--	---	---

ATTACHMENTS

SAS™

SAS Quick Coupler System

Allows quick, easy interchangeability with widely accepted attachments when integrated with the Sellick Mast

Forks

Available in SAS Quick Coupler or Shaft Mount configuration

- 72" Adjustable Fork
- 15' 5" Fixed Width Fork

SELICK

Masts and Carriages

2-Stage Mast includes 72" ITA Class IV Hook Carriage

- 120" Mast and Carriage
- 144" Mast and Carriage
- 168" Mast and Carriage

Forks

Available in ITA Class IV or Shaft Mount configuration

- 48" X 2.5" X 6"
- 60" X 2.5" X 6"
- 72" X 2.5" X 6"

Hydraulic Accumulator

Load Cushioning System

Load Backrest

- 72" (w) X 56" (h)
- 84" (w) X 56" (h)

KAWASAKI LOADERS

More Than A Machine, A Complete Solution

Kawasaki Construction Machinery Corp. of America, a division of Kawasaki Heavy Industries, is a leading supplier of a full range of high quality wheel loaders. In fact, Kawasaki is the oldest on-going manufacturer of articulated, rubber-tired wheel loaders in the world. Since 1962, Kawasaki wheel loaders have continuously evolved to bring you the best in equipment and support services, backed by a carefully selected dealer network.

Kawasaki articulated wheel loaders incorporate innovative design features coupled with extensive knowledge and experience gained from real-world applications. Kawasaki pioneered Z-Link design to provide unmatched utility, high breakout force and efficiency in its machines. Powered by proven emissions-compliant Cummins diesel engines, durability and serviceability are designed into every Kawasaki loader.

Kawasaki loaders are assembled at the company's modern facilities in Newnan, GA. Service and support operations are headquartered in Kennesaw, GA.

A state-of-the-art parts distribution system links dealers with the main parts warehouse, allowing them to order parts directly. Qualified craftsmen rebuild components for all Kawasaki models at our fully-equipped rebuild center, making component exchange easier and faster. An independent oil analysis program allows monitoring of critical systems to reduce unscheduled downtime.

The independent dealers that represent and support Kawasaki loaders are experts in their markets and are dedicated to providing you with the best service available. Together, we are committed to making your investment in a Kawasaki loader a sound business decision that will pay dividends for years to come.



 **Kawasaki**
KAWASAKI CONSTRUCTION MACHINERY
CORP. OF AMERICA

2140 Barrett Park Drive • Suite 101
Kennesaw, Georgia 30144
Tel: 770-499-7000
Fax: 770-421-6842
www.kawasakiloaders.com

