

65TM-2 OPERATING SPECIFICATIONS

ENGINE

Make/Model/Fuel Type	Cummins/B5.9-C/Diesel
Type	4-cycle, watercooled, direct injection with turbocharger
Net flywheel horsepower	134HP/2400 RPM
Max torque	383 ft/lb/1400 RPM
Number of cylinders	6
Bore and stroke	4.02" x 4.72" (102mm x 120mm)
Total displacement	359 in3 (5883 cm3)
Alternator	DC24V - 1200w (50amp)
Starting motor	24V - 4.5kw (6HP)
Battery	12V - 110AH, 2 units
Governor	All-speed, mechanical type

TORQUE CONVERTER AND TRANSMISSION

Torque converter	3 elements, single stage
Torque stall ratio	3.15:1
Main clutches	Wet hydraulic, multi-disk type
Cooling method	Forced circulation type
Transmission	Full power shift, 4 forward, 4 reverse with automatic mode (2nd - 4th with downshift switch for 2nd - 1st downshifting)
Forward & reverse (maximum speed)	1st: 5.0 MPH (8.0 km/hr) 2nd: 8.0 MPH (13.0 km/hr) 3rd: 12.5 MPH (20.0 km/hr) 4th: 23.1 MPH (37.0 km/hr)

SERVICE REFILL CAPACITY

LOCATION	CAPACITY:	Gallons	Liters
Engine (coolant)		11.10	(42.2)
Fuel tank (diesel fuel)		47.60	(175.0)
Engine oil (oil pan)		3.75	(14.2)
Front axle (gear oil)		6.60	(20.0)
Rear axle (gear oil)		6.60	(20.0)
Steering box		0.10	(0.4)
Torque converter and transmission (engine oil)		7.90	(30.0)
Hydraulic system including tank (hydraulic oil)		26.4	(100.0)
Brake oil tank (engine oil)		0.4	(1.5)

HYDRAULIC AND STEERING SYSTEM

Steering type	Articulated frame steering	
Steering mechanism	Hydraulic power steering unit, mechanical follow-up	
Lift (boom) cylinder	Two (2) double-acting piston type: 4.7" x 28" (120mm x 713mm)	
Tilt (bucket) cylinder	Two (2) double-acting piston type: 5.3" x 29.75" (110mm x 756mm)	
Steering cylinder	Two (2) double-acting piston type: 2.5" x 14.7" (65mm x 374mm)	
Steering oil pump	Gear type: 26.2 GPM/1000psi @2350 RPM (99 LPM/70kg/cm2 @2350 RPM)	
Main oil pump	Gear type: 16.1 GPM/1000psi @2350 RPM (61 LPM/70kg/cm2 @2350 RPM)	
Relief valve set pressure	Loading	2770 psi (195 kg/cm ²)
	Steering	3000 psi (210 kg/cm ²)
HYDRAULIC CYCLE TIME*		
Lifting time (at full load)	5.8 sec.	
Lowering time (empty)	2.9 sec.	
Bucket dumping time	2.2 sec.	
TOTAL	10.9 sec.	

* Measured in accordance with SAE J732C

AXLE SYSTEM

Drive system	4-wheel drive	
Front and rear axle	Semi-floating type	
Tires	Standard	20.5 x 25-12PR (L-2)
	Optional	17.5 x 25-12PR (L-3) 20.5 x 25-12PR (L-3)
Reduction and differential gear	Spiral bevel/gear, 1 stage reduction, torque proportioning type	
Final reduction gear	Internal planetary gear (5.625:1) inboard mounted	
Oscillation angle	±12° (total ±24°)	

BRAKE SYSTEM

Service brakes	4-wheel enclosed wet disk brakes, dual circuit	
Parking/Emergency brake	Spring applied air released type, located on drive shaft. Meets MSHA requirements	

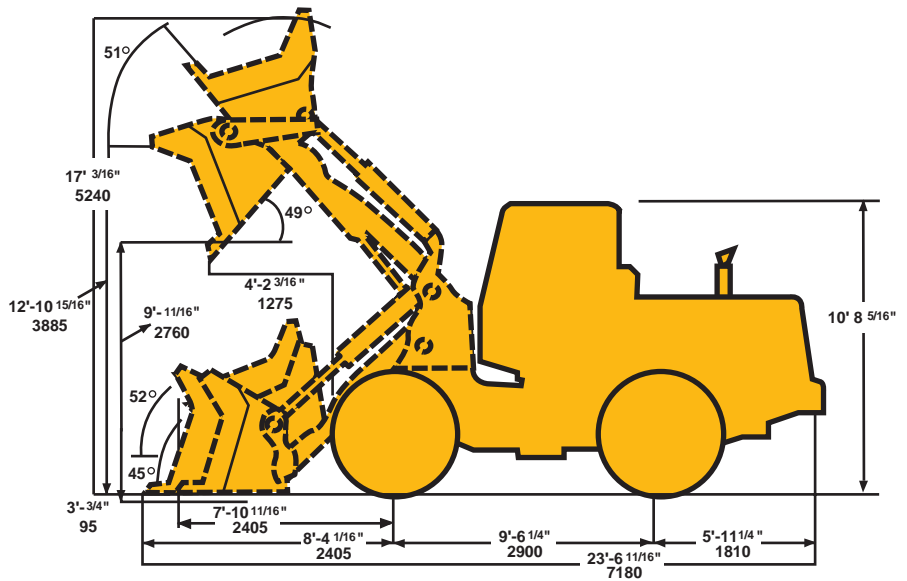
65^{M-2} OPERATING SPECIFICATIONS

WEIGHTS AND DIMENSIONS (SUPPLEMENTAL DATA)

	lb (kg)	Operating Weight	Tipping Load		in (mm)	Overall Width (Outside Tire)	Tread	Vertical Dimensions	Overall Length
			Straight	Full Turn					
ROPS Canopy (Instead of ROPS Cab)	lb (kg)	-705 (-320)	-660 (-300)	-630 (-285)	in (mm)				
Remove ROPS Canopy and Cab (for transport only)	lb (kg)	-1150 (-520)			in (mm)			-1'8 ⁷ / ₈ " (-530)	
Tires: 17.5-25-12PR (L-2)	lb (kg)	-485 (-220)	-365 (-165)	-320 (-145)	in (mm)	-1'1 ¹ / ₁₆ " (-30)	-2'3 ³ / ₈ " (-60)	-2'3 ³ / ₄ " (-70)	+2'3 ³ / ₈ " (+60)
20.5-25-12PR (L-3)	lb (kg)	+265 (+120)	+210 (+95)	+190 (+85)	in (mm)				
Air conditioner	lb (kg)	+220 (+100)	+265 (+120)	+230 (+105)	in				
Belly Guard (rear frame)	lb (kg)	+240 (+110)	+375 (+170)	+330 (+150)	in				

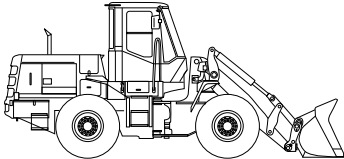

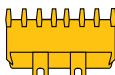
Base Tire 20.5-25-12PR (L-2)

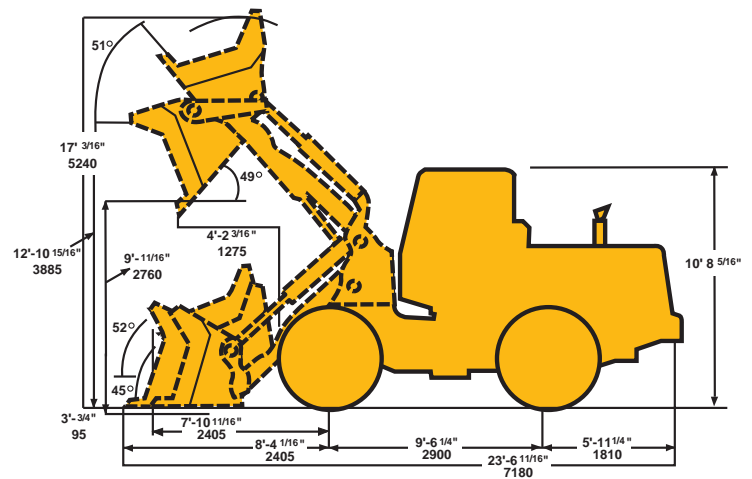
Tread 6'4" (1870mm)
 Width (outside tire) 7'10¹¹/₁₆" (2405mm)
 Width (outside bucket) 8'1¹/₂" (2450mm)
 Equipped with GSC bucket with bolt on cutting edge
 20.5-25-12PR (L-2) Tire and ROPS Cab



65TM-2 BUCKET DATA

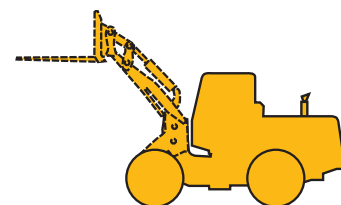
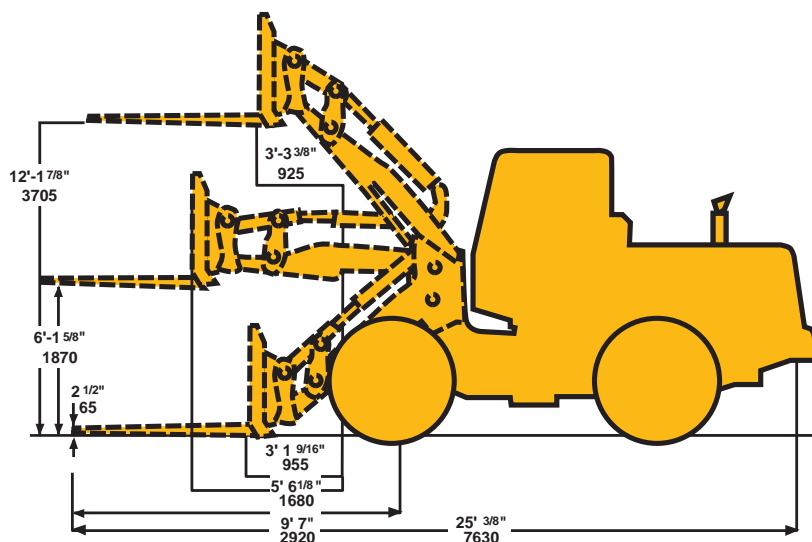
General Purpose Bucket

			General Purpose	
			With Bolt-on Cutting Edge	With Teeth
				
Capacity	Heaped	yd ³ (m ³)	2.6 (2.0)	2.5 (1.9)
	Struck	yd ³ (m ³)	2.3 (1.7)	2.2 (1.6)
Maximum dumping clearance		ft-in (mm)	9'3 ¹ / ₁₆ " (2760)	9' (2745)
Dumping reach (to front of bucket edge or tooth)		ft-in (mm)	3'11 ¹ / ₄ " (1275)	4'1 ¹ / ₁₆ " (1255)
Bucket hinge pin height		ft-in (mm)	12'8 ¹⁵ / ₁₆ " (3885)	12'8 ¹⁵ / ₁₆ " (3885)
Digging depth		ft-in (mm)	3 ³ / ₄ " (95)	4 ¹⁵ / ₁₆ " (110)
Breakout force		lb (kg)	22,597 (10,250)	23,810 (10,800)
Bucket tilt-back angle	at ground level		45°	43°
	at carry position		52°	48°
Overall	Length	ft-in (mm)	23'6 ¹ / ₁₆ " (7180)	23'10" (7265)
	Height	ft-in (mm)	10'8 ³ / ₄ " (3270)	10'8 ³ / ₄ " (3270)
	Width (outside tire)	ft-in (mm)	7'10 ¹¹ / ₁₆ " (2405)	7'10 ¹¹ / ₁₆ " (2405)
	Width (outside bucket)	ft-in (mm)	8 ⁷ / ₁₆ " (2450)	8 ⁷ / ₁₆ " (2450)
Wheel base		ft-in (mm)	9'6 ¹ / ₄ " (2900)	9'6 ¹ / ₄ " (2900)
Minimum turning radius	at outside bucket	ft-in (mm)	18'8 ³ / ₄ " (5710)	18'10 ¹ / ₈ " (5745)
	at center of outside tire	ft-in (mm)	16'1 ¹ / ₁₆ " (4920)	16'1 ¹ / ₁₆ " (4920)
Minimum ground clearance		ft-in (mm)	1'5 ¹ / ₂ " (445)	1'5 ¹ / ₂ " (445)
Full articulation angle		degree	40°	40°
Operating weight (with ROPS Cab)		lb (kg)	25,375 (11,510)	25,290 (11,470)
Static tipping load (with ROPS Cab)	Straight	lb (kg)	10,955 (7690)	17,065 (7740)
	Full turn	lb (kg)	14,505 (6580)	14,595 (6620)



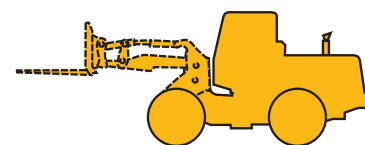
The weight and load figure include Enclosed ROPS Cab, 20.5-25-12PR (L-2) tires, Full fuel tank and operator.

65TM-2 BUCKET DATA

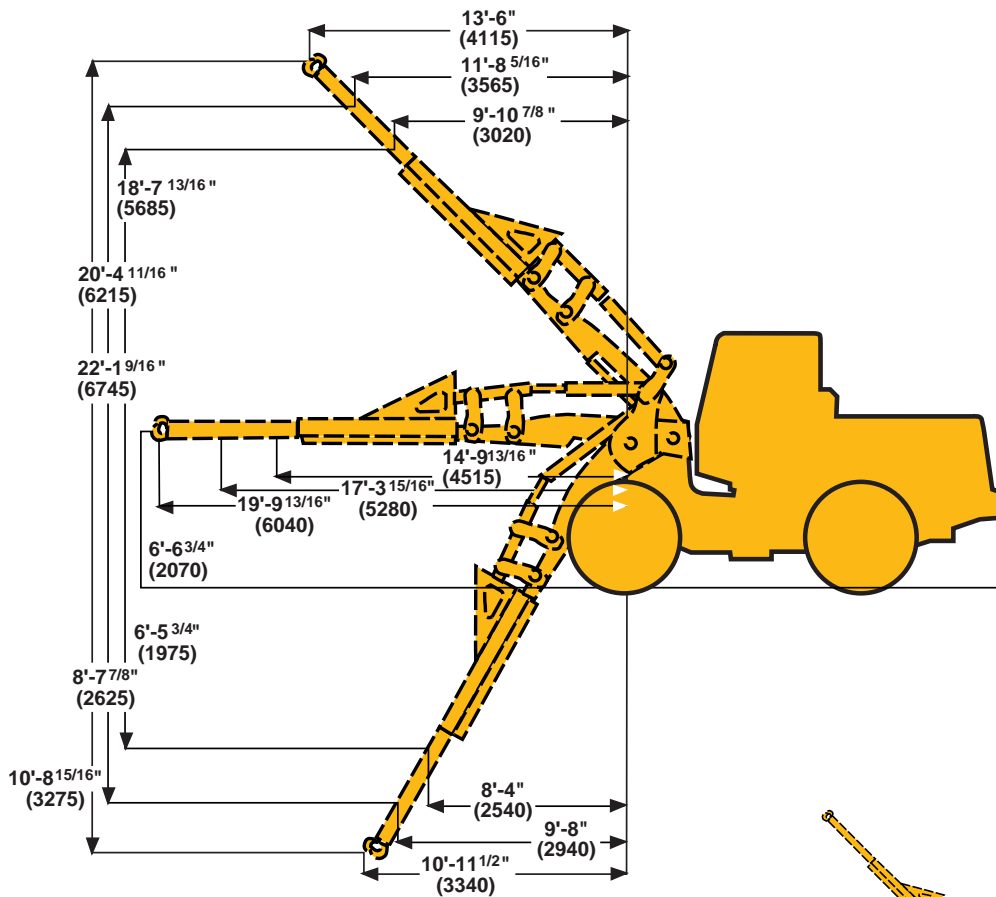


Construction Utility Fork

SPECIFICATIONS WITH FORKS			
Fork Tine length		48"	60"
Ground to top of tine clearance	ft-in (mm)	12'1 ⁷ / ₈ " 3705	12'1 ⁷ / ₈ " 3705
Reach with arms horizontal and forks level	ft-in (mm)	6'1 ⁵ / ₈ " 1870	6'1 ⁵ / ₈ " 1870
Overall Length	ft-in (mm)	25' ³ / ₈ " 7630	26' ³ / ₈ " 7935
Static tipping load with level arms and forks, load center (23.6', 600mm.) straight	lb (kg)	12,875 5840	12,145 5510
Static tipping load with level arms and forks, load center (23.6', 600mm.) full 40° turn	lb (kg)	11,025 5000	10,405 4720
Operating weight*	lb (kg)	24,910 11,300	25,000 11,340
Attachment weight with 60" carriage	lb (kg)	1345 610	1485 674



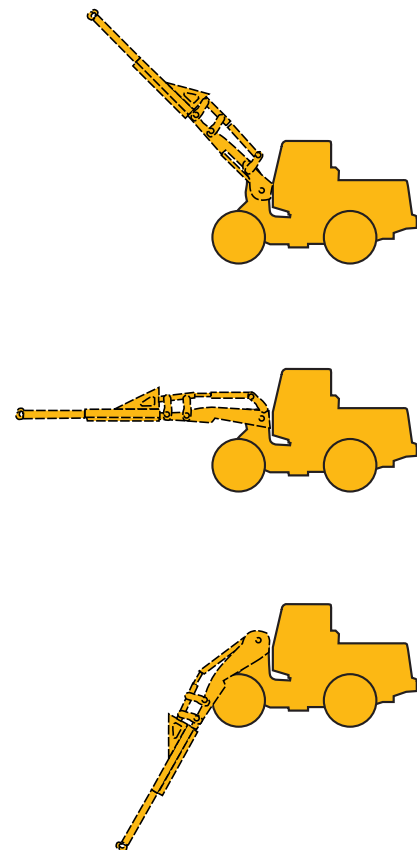
65TM-2 BUCKET DATA



Extendable Boom

SPECIFICATIONS WITH EXTENDABLE BOOM			7'5 3/4"	10'7 1/4"	13'8 3/4"
Boom position					
Operating load at 40° articulation		lb (kg)	4460 2022	3790 1720	3295 1495
Static tipping load*	Full 40° turn	lb (kg)	7365 3340	6260 2840	5445 2470
	Straight	lb (kg)	8620 3910	7320 3320	6350 2880
Operating weight*		lb (kg)	24,650 11,180		
Attachment weight		lb (kg)	1170 531		

*Static tipping load and operating weight are based on standard machine configuration with 20.5-25-12PR (L-2) tires, full fuel tank, and operator.



65TM-2 EQUIPMENT DATA

STANDARD EQUIPMENT

<p>Adjustable Steering Column</p> <p>Air Cleaner (Double Element Donaldson with Precleaner)</p> <p>Alarms (Audible): Air Master Overstroke Air Pressure Brake Oil Level Engine Oil Pressure</p> <p>Alarms (Visual): Air Filter Air Master Overstroke Air Pressure Battery Discharge Brake Oil Level Converter Oil Temperature Engine Oil Pressure Engine Coolant Temperature Parking Brake</p> <p>Alternator (50 amp)</p> <p>AM/FM Cassette Radio</p> <p>Batteries: 12V-110AH (2 units)</p>	<p>Brake (Parking) Spring applied; Air released, Drum type</p> <p>Brakes (Service) Air/Oil Actuation Enclosed Wet Disc Dual System</p> <p>Bucket Control Lever (Dual)</p> <p>Bucket Leveler</p> <p>Boom Kickout</p> <p>Coat Hook</p> <p>Cold Start Aid</p> <p>Counterweight</p> <p>Coupler, Hydraulic w/Lines and Control</p> <p>Cup Holder</p> <p>Downshift Button</p> <p>Drawbar</p> <p>Electrical System (24 volt)</p> <p>Engine Coolant Expansion Tank</p> <p>Fan (Blower)</p> <p>Fenders (Front and Rear)</p>	<p>Gauges: Air Pressure Converter Oil Temperature Engine Coolant Temperature Fuel Level Hour Meter Hydraulic Oil Level Sight Gauge Tachometer</p> <p>Heater/Pressurizer (40,000 BTU)</p> <p>Hoodsides (Hinged)</p> <p>Horn (Electric)</p> <p>Indicators: High Beam Parking Brake Transmission Declutch Transmission Shift Monitor Working Light</p> <p>Linkage (Parallel, Sealed)</p> <p>Lights: 4 Front 2 Rear 2 Stop/Tail 2 Backup Muffler</p>	<p>Neutral Safety Start</p> <p>Operator's Manual Box</p> <p>Radiator: Heavy Duty, Plate Fin Type</p> <p>Radiator Grille, Hinged</p> <p>Reverse Alarm</p> <p>ROPS Cab: Enclosed cab with sound suppression, front lights, front and rear wipers and washers, one rear view and two side mirrors, tinted glass, and sliding side windows</p> <p>Safety Articulation Locking Bar</p> <p>Seat (Super Deluxe, Adjustable, Suspension)</p> <p>Seat Belt, Retractable, 3" wide</p> <p>Shift Control Unit for Automatic Shift</p> <p>Torque Proportioning Differential</p> <p>Transmission Declutch Selector Switch</p> <p>Vandalism Protection</p> <p>Wiper, Front Intermittant</p>
---	--	--	--

OPTIONAL EQUIPMENT

<p>Air conditioner (R134 refrigerant)</p> <p>Air dryer</p> <p>Belly guard</p> <p>Bolt-on cutting edge segments</p>	<p>Bucket teeth</p> <p>Cushion dump valve</p> <p>Easy Clean Radiator Side-by-Side</p> <p>Emergency steering</p>	<p>Hydraulic System, 3-spool Valve</p> <p>Lighting System</p> <p>ROPS rear lighting system</p> <p>No spin differential</p>	<p>Ride control</p> <p>ROPS canopy</p> <p>Single lever hydraulic control</p> <p>Turn signal w/4-way flasher</p>
--	---	--	---