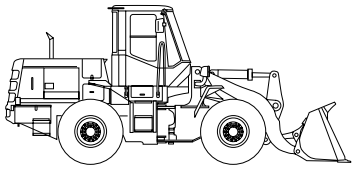
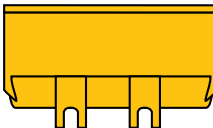
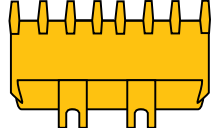


65Z^{IV}-2 BUCKET DATA

			General Purpose	
			With Bolt-on Cutting Edge	With Teeth
				
Capacity	Heaped	yd ³ (m ³)	2.6 (2.0)	2.5 (1.9)
	Struck	yd ³ (m ³)	2.3 (1.7)	2.2 (1.6)
Maximum dumping clearance		ft-in (mm)	8'10" (2695)	8'6 ⁹ / ₁₆ " (2605)
Dumping reach (to front of bucket edge or tooth)		ft-in (mm)	3'7 ⁷ / ₈ " (1115)	3'10 ¹ / ₂ " (1180)
Bucket hinge pin height		ft-in (mm)	11'10 ¹ / ₈ " (3610)	11'10 ¹ / ₈ " (3610)
Digging depth		ft-in (mm)	3'3 ³ / ₄ " (95)	4'3 ³ / ₈ " (110)
Breakout force		lb (kg)	21,400 (9700)	22,900 (10,400)
Bucket tilt-back angle	at ground level		43°	43°
	at carry position		50°	50°
Overall	Length	ft-in (mm)	23'0" (7010)	23'4 ¹¹ / ₁₆ " (7130)
	Height	ft-in (mm)	10'6" (3200)	10'6" (3200)
	Width (outside tire)	ft-in (mm)	7'9 ¹ / ₂ " (2375)	7'9 ¹ / ₂ " (2375)
	Width (outside bucket)	ft-in (mm)	8'1 ¹ / ₂ " (2450)	8'1 ¹ / ₂ " (2450)
Wheel base		ft-in (mm)	9'6 ¹ / ₄ " (2900)	9'6 ¹ / ₄ " (2900)
Minimum turning radius	at outside bucket	ft-in (mm)	18'8 ³ / ₄ " (5710)	18'10 ¹ / ₈ " (5745)
	at center of outside tire	ft-in (mm)	16'2 ⁷ / ₈ " (4950)	16'2 ⁷ / ₈ " (4950)
Minimum ground clearance		ft-in (mm)	1'2 ³ / ₄ " (375)	1'2 ³ / ₄ " (375)
Full articulation angle		degree	40°	40°
Operating weight (with ROPS Cab)		lb (kg)	22,970 (10,420)	22,880 (10,380)
Static tipping load (with ROPS Cab)	Straight	lb (kg)	17,750 (8050)	17,860 (8100)
	Full turn	lb (kg)	15,190 (6890)	15,280 (6930)

The weight and load figure include Enclosed ROPS Cab. 17.5-25-12PR (L-2) tires. Full fuel tank and operator.

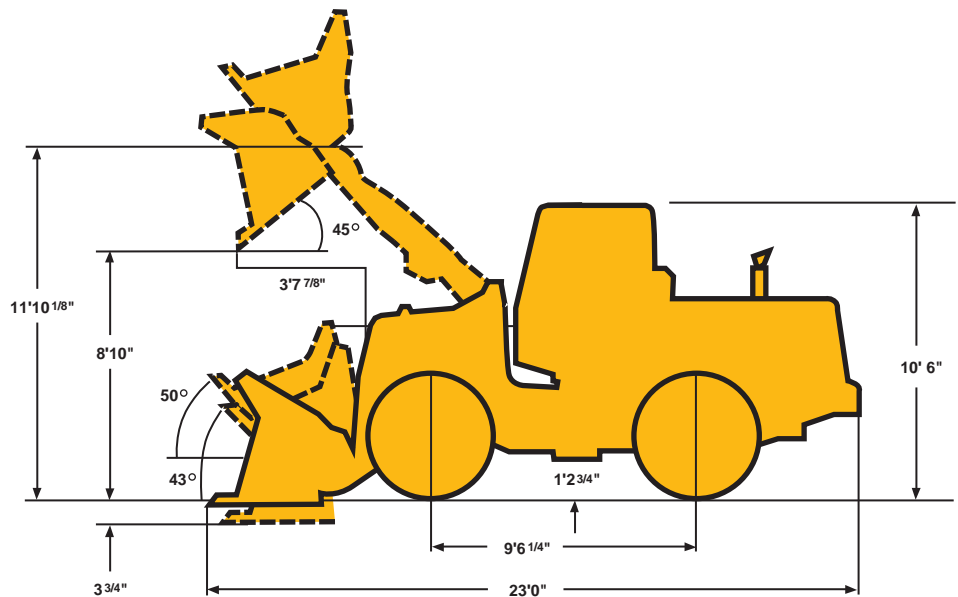
65Z^{IV}-2 OPERATING SPECIFICATIONS

WEIGHTS AND DIMENSIONS (SUPPLEMENTAL DATA)

	Operating Weight	Tipping Load		Overall Width (Outside Tire)	Vertical Dimensions	Overall Length		
		Straight	Full Turn					
ROPS Canopy (Instead of ROPS Cab)	lb (kg)	-440 (-200)	-330 (-150)	-310 (-140)	in (mm)			
Remove ROPS Canopy and Cab (for transport only)	lb (kg)	+1150 (+520)			in (mm)	-1'8 ⁷ / ₈ " (-530)		
Counterweight (Instead of rear tire ballast)	lb (kg)	+565 (+260)	+1365 (+620)	+1170 (+530)	in (mm)			
Tires: 20.5-25-12PR (L-2)	lb (kg)	+485 (+220)	+365 (+165)	+320 (+145)	in (mm)	+1 ³ / ₁₆ " (+30)	-2 ³ / ₄ " (+70)	-2 ³ / ₈ " (-60)
20.5-25-12PR (L-3)	lb (kg)	+750 (+340)	+575 (+260)	+510 (+230)	in (mm)	+1 ³ / ₁₆ " (+30)	+2 ³ / ₄ " (+70)	-2 ³ / ₈ " (-60)
Air conditioner	lb (kg)	+220 (+100)	+265 (+120)	+230 (+105)	in (mm)			
Belly Guard (rear frame)	lb (kg)	+240 (+110)	+375 (+170)	+330 (+150)	in (mm)			

Base Tire 17.5-25-12PR (L-2)

Tread 6'4" (1930mm)
 Width (outside tire) 7'9¹/₂" (2375mm)
 Width (outside bucket) 8'1¹/₂" (2450mm)
 Equipped with GSC bucket with bolt on cutting edge
 17.5-25-12PR (L-2) Tire and ROPS Cab



65^{IV}-2 OPERATING SPECIFICATIONS

ENGINE

Make/Model/Fuel Type	Cummins/B5.9-C/Diesel
Type	4-cycle, watercooled, direct injection with turbocharger
Net flywheel horsepower	134 HP/2400 RPM
Max torque	383 ft/lb (34 kgm)/1400 RPM
Number of cylinders	6
Bore and stroke	4.01" x 4.72" (102mm x 120mm)
Total displacement	359 in ³ (5883 cm ³)
Alternator	AC24V - 1.2kw (50amp)
Starting motor	24V - 4.5kw (6HP)
Battery	12V - 110AH, 2 units
Governor	All-speed, mechanical type

TORQUE CONVERTER AND TRANSMISSION

Torque converter	3 elements, single stage
Torque stall ratio	3.15:1
Main clutches	Wet hydraulic, multi-disk type
Cooling method	Forced circulation type
Transmission	Full power shift, 4 forward, 4 reverse with automatic mode (2nd - 4th) with downshift switch for 2nd - 1st downshifting
Forward & reverse (maximum speed)	1st: 5.0 MPH (8.0 km/hr) 2nd: 8.0 MPH (13.0 km/hr) 3rd: 12.5 MPH (20.0 km/hr) 4th: 23.1 MPH (37.0 km/hr)

SERVICE REFILL CAPACITY

LOCATION	CAPACITY:	Gallons	Liters
Engine (coolant)		11.00	(42.2)
Fuel tank (diesel fuel)		47.60	(180.0)
Engine oil (oil pan)		3.75	(14.2)
Front axle (gear oil)		6.60	(25.0)
Rear axle (gear oil)		6.60	(25.0)
Steering box		0.10	(0.4)
Torque converter and transmission (engine oil)		7.90	(30.0)
Hydraulic system including tank (hydraulic oil)		26.40	(100.0)
Brake oil tank (engine oil)		0.40	(1.5)

HYDRAULIC AND STEERING SYSTEM

Steering type	Articulated frame steering	
Steering mechanism	Hydraulic power steering unit, mechanical follow-up	
Lift (boom) cylinder	Two (2) double-acting piston type: 4.7" x 28" (120mm x 713mm)	
Tilt (bucket) cylinder	One (1) double-acting piston type: 5.5" x 19.1" (140mm x 486mm)	
Steering cylinder	Two (2) double-acting piston type: 2.5" x 14.7" (65mm x 374mm)	
Steering oil pump	Gear type: 26.2 GPM/1000psi @ 2350 RPM (99 LPM/70kg/cm ² @ 2350 RPM)	
Main oil pump	Gear type: 16.1 GPM/1000psi @ 2350 RPM (61 LPM/70kg/cm ² @ 2350 RPM)	
Relief valve set pressure	Loading	2770 psi (195 kg/cm ²)
	Steering	3000 psi (210 kg/cm ²)
HYDRAULIC CYCLE TIME*		
Lifting time (at full load)	5.8 sec.	
Lowering time (empty)	2.9 sec.	
Bucket dumping time	1.2 sec.	
TOTAL	9.9 sec.	

* Measured in accordance with SAE J732C

AXLE SYSTEM

Drive system	4-wheel drive	
Front and rear axle	Semi-floating type	
Tires	Standard	17.5 x 25-12PR (L-2)
	Optional	17.5 x 25-12PR (L-3) 20.5 x 25-12PR (L-2) (L-3)
Reduction and differential gear	Spiral bevel/gear, 1 stage reduction, torque proportioning type	
Final reduction gear	Internal planetary gear (5.625:1) inboard mounted	
Oscillation angle	±12° (total ±12°)	

BRAKE SYSTEM

Service brakes	4 wheel enclosed wet disk brakes, Dual circuit
Parking/Emergency brake	Spring applied air released type, located on drive shaft. Meets MSHA requirements

65^Z_{IV}-2 EQUIPMENT DATA

STANDARD EQUIPMENT

Adjustable Steering Column Air Cleaner (Double Element Donaldson) Alarms (Audible): Air Pressure Air Master Overstroke Brake Oil Level Engine Oil Pressure Alarms (Visual): Air Filter Air Master Overstroke Air Pressure Battery Discharge Brake Oil Level Converter Oil Temperature Engine Oil Pressure Engine Coolant Temperature Parking Brake Alternator (50 amp) AM/FM Cassette Radio Batteries: 12V-110AH (2 units) Brake (Parking) Spring applied, Air released, Drum type	Brakes (Service) Oil/Air Actuation Enclosed Wet Disc Dual System Bucket Control Lever (Dual) Bucket Leveler Boom Kickout Coat Hook Cold Start Aid Cup Holder Downshift Button Drawbar Electrical System (24 volt) Engine Coolant Expansion Tank Fan (Blower) Fenders (Front and Rear) Gauges: Air Pressure Converter Oil Temperature Engine Coolant Temperature Fuel Level Hour Meter Hydraulic Oil Level Tachometer	Heater/Pressurizer (40,000 BTU) Hoodsides (Hinged) Horn (Electric) Hydraulic Oil Cooler Indicators: High Beam Parking Brake Transmission Declutch Transmission Shift Monitor Working Light Linkage (Z-type, Sealed) Lights: 4 Front 2 Rear 2 Stop/Tail 2 Backup Muffler Neutral Safety Start Operator's Manual Box Radiator: Heavy Duty, Plate Fin Type Radiator Grille, Hinged Reverse Alarm	ROPS Cab: Enclosed cab with sound suppression, front lights, front and rear wipers and washers, one rear view and two side mirrors, tinted glass, and sliding side windows Safety Articulation Locking Bar Seat (Super Deluxe, Adjustable Suspension) Seat Belt, Retractable, 3" wide Shift Control Unit for Automatic Shift Torque Proportioning Differential Transmission Declutch Selector Switch Vandalism Protection Wiper, Front Intermittant
---	---	--	---

OPTIONAL EQUIPMENT

Air Conditioner (R134A Refrigerant) Air Dryer Belly Guard Bolt-On Cutting Edge Segments Bucket Teeth	Counterweight Cushion Dump Valve Easy Clean Radiator/Oil Cooler Side-by-Side Emergency Steering Engine Pre-Cleaner	High Lift Arm Hydraulic System, 3-Spool Valve Lighting System No Spin Differential Quick Coupler and Attachments	Ride Control ROPS Canopy Single Lever Hydraulic Control Turn Signal With Four-way Flasher
--	---	--	---