

80Z^{IV}-2



 **Kawasaki**

THE RUGGED, DEPENDABLE **80Z^{IV}-2**

A COMPLETE SOLUTION

- Emissions-compliant 178 HP Cummins diesel
- 3.5–4.0 cu. yard bucket standard
- Accepts a wide assortment of attachments to handle many jobs
- Redesigned ROPS cab optimizes productivity and visibility
- Ride Control option provides stable load handling
- Single hydraulic control option for easy operation
- Automatic powershift transmission with four forward and reverse speeds
- Outboard-mounted, four-wheel, dual circuit sealed wet disc brakes for reliability and long service life
- Torque-proportioning differentials for longer brake and tire life
- Heavy duty three-piece tire rims for easy servicing
- Easy access to drains, filters and fittings



The 80Z^{IV}-2 is designed with rapid cycle times in mind. These machines incorporate over 35 years of field-proven experience to dramatically enhance productivity and performance.

THE POWER TO PERFORM!

The 80Z^{IV}-2 loader is a versatile, high productivity wheel loader for a wide range of applications from asphalt and concrete plants to road construction. Featuring a Cummins C-8.3-C diesel engine producing 178 flywheel horsepower, a 3.5–4.0 cu. yard bucket, a certified ROPS cab and a host of other features that provide high operating efficiency, ease of maintenance and safety, the 80Z^{IV}-2 is always ready for the heavy duty jobs.



OPERATOR PRODUCTIVITY AND SAFETY

The 80Z^{IV}-2 features a completely redesigned ROPS cab with an operator's compartment that offers unmatched comfort and is designed to maximize efficiency and productivity. The cab is accessible by ladders on both sides, features a wrap-around tinted windshield, has front and rear wipers and includes many other features which contribute to improved safety, visibility and comfort. The 80Z^{IV}-2 comes standard with an AM/FM cassette player and can even be ordered with an optional 25,000 BTU air conditioner.



Kawasaki and their dealer organization offer comprehensive support and service programs designed to keep you on the job.

PUTTING THE 807Z-2 TO WORK

Like all Kawasaki loaders, the 807Z-2 has a 35-year heritage of strength and reliability. Dual lever hydraulic control with a single lever option and single twist-grip transmission control offer ease of operation.

The 807Z-2 comes equipped with a 3.5–4.0 cubic yard bucket with a bolt-on cutting edge. A third spool valve, control lever, linkage and line are available to handle a number of attachments and extend the 807Z-2's versatility. Other buckets, Quick Couplers and attachments are also available.

The outboard-mounted, four-wheel sealed wet disc brakes are designed for long life and easy access and overhaul. Standard spin-on filters, remote mounted grease fittings and oil drain simplify maintenance. The standard 23.5 x 25 (L3) tires and optional 20.5 x 25 tires use heavy duty three-piece rims for easy servicing in the field.



UNMATCHED SUPPORT

Kawasaki maintains a large inventory of new components to ensure outstanding parts availability and minimal downtime. In addition, a predictive oil analysis program helps eliminate unnecessary maintenance and helps find problems before they occur. Kawasaki also stocks an array of cost-effective rebuilt components.

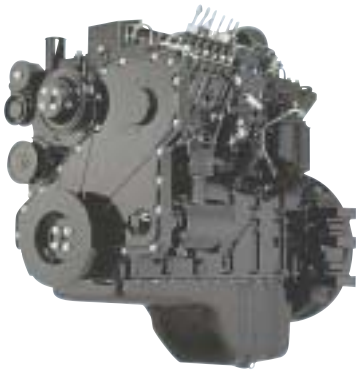
BUILT TO STAY ON THE JOB

Kawasaki loaders are designed with the durability to provide years of service. Backed by a dealer network of heavy equipment experts and a dedicated support staff in the Kawasaki parts and service organization, your investment in a Kawasaki loader is an excellent choice that will pay dividends for years to come.

POWER AND PERFORMANCE UNMATCHED PRODUCTIVITY

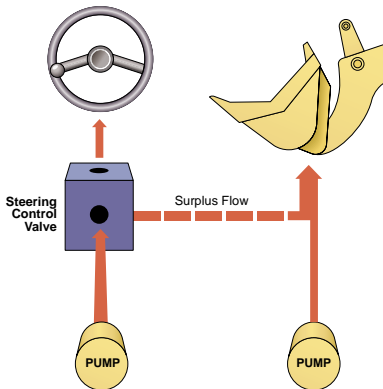
The Kawasaki *S07Z-2* means business. It incorporates the best in design and technology, giving your operators the tool they need to get the job done.

Because Kawasaki specializes in the design and manufacture of articulated wheel loaders, you get a machine with a 35-year heritage of successful innovations. The power and productivity that the *S07Z-2* brings to the job is a result of that experience.



WORLD-CLASS ENGINES

- 178 HP emissions-compliant Cummins C-8.3-C diesel
- Complies with tough new emissions standards for 2001
- Totally reengineered for longer service life
- Reliable and fuel efficient
- Extensive distribution system
- 24 volt battery system for reserve power



HIGH EFFICIENCY HYDRAULIC SYSTEM

- Dry, reliable
- Cast iron gear pump
- Energy efficient, steering circuit supplements main
- Easy access to two-spool control valve
- Large oil reservoir keeps oil cooler



TRANSMISSION

- Automatic four-speed transmission with powershift
- Single lever control
- Left brake pedal activates transmission declutch switch
- Downshift button speeds cycle times and reduces operator fatigue

PROVIDE



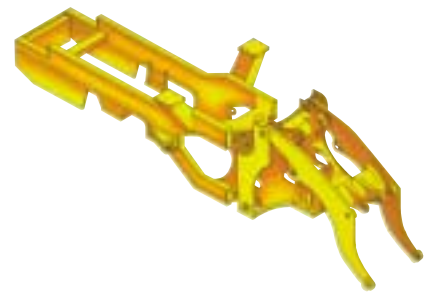
AXLES/BRAKES

- Heavy-duty torque proportioning differential
- 23.5 x 25 (L-3) tires standard
- 20.5 x 25 (L-2 and L-3) and 23.5 x 25 (L-2) tires available
- 3-piece wheel rims standard
- Outboard-mounted, four-wheel, dual-circuit wet disc brakes
- Easy maintenance
- High capacity
- Long life



LIFT ARMS/BUCKETS

- Z-linkage
- High breakout force
- Optional high lift arms available
- 3.5–4.0 cu. yard bucket standard
- Easy loading
- Excellent load retention
- Full assortment of edges and teeth
- Complete array of attachments available
- Heel plates extend bucket life
- Bucket leveler and boom kick-out standard



STRONG, RUGGED BOX FRAME

- Massive center pins and bearings
- High strength loader tower
- Heavy box frame rear chassis
- All pins of the loading system are fully sealed with grease to provide dependable service with minimum maintenance



THE COMFORT ZONE

Kawasaki has taken a from-the-ground-up approach to create a cab designed with the operator in mind. The new cab focuses on providing the ultimate environment for productivity, comfort and safety. The high visibility, quiet, temperature controlled cab offers the operator ideal surroundings for putting the Kawasaki loader through its paces.

New Features

- Adjustable tilt steering with interlocking instrument panel
- Adjustable wrist rest
- AM/FM cassette radio, standard
- Viscous isolation-mounted to reduce vibration
- Wrap-around tinted windshield for excellent visibility
- Reduced sound levels
- Personal storage space and coat hook
- Intermittent front wiper
- Seven-way adjustable seat with headrest and adjustable arms, standard

Redesigned Features

- Single twist grip transmission lever redesigned for easy gripping and smoother shifting
- All systems monitored with lights and alarms
- Dual, pilot-assisted hydraulic controls—fingertip control
- One rearview and two side mirrors
- Rear lights added to ROPS

Standard Features

- 25,000 BTU air conditioner available
- Certified ROPS
- Rear cab light
- Doors latch back
- Side windows slide down
- 40,000 BTU heater standard
- Pressurized air control
- Left brake pedal activates transmission declutch switch
- Front and rear wipers and washers
- Heavy duty suspension

Optional Features

- Air ride seat
- Single lever hydraulic control



EASY ACCESS SIMPLIFIES SERVICING

- Hinged grille makes radiator cleaning easy
- Engine side covers open wide for optimum access
- Filters positioned within easy reach
- Easy access to drains, filters and fittings
- Grease fittings are grouped for easy lubrication
- Readily available Fleetguard and Donaldson filters
- Starters and alternators available through Cummins national distribution network
- 3-piece wheel rims standard for easy field service
- Ladders on both sides of the machine
- Pressurized air control reduces dust in cab and control boxes



OPTIONS

QUICK COUPLER ATTACHMENT

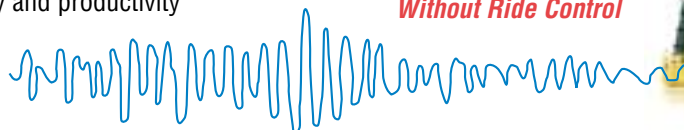
The JRB Quick Coupler, can be used in conjunction with a variety of attachments, including:

- General and multi-purpose buckets
- Side dump bucket
- Construction utility forks
- Utility pallet forks
- Extendable boom
- Paddle top clamp forks
- Grapple bucket
- Loader rake and loader rake with hydraulic clamps



RIDE CONTROL

- Stable load handling
- Reduces operator fatigue
- Cuts vibration and equipment wear
- Improves safety and productivity
- Less spillage
- Faster travel speed



Without Ride Control



With Ride Control

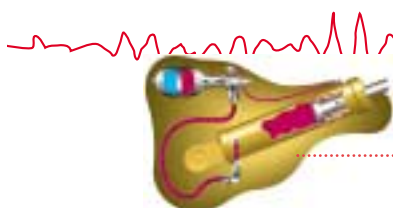
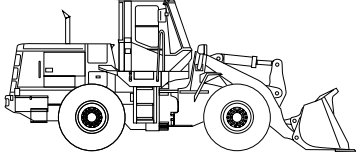
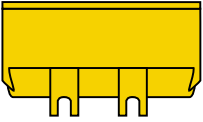
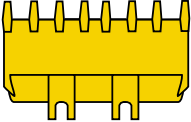
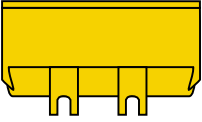
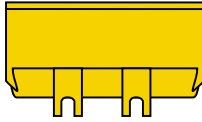


Illustration representative of similar models.

80Z^{II}-2 BUCKET DATA

			General Purpose		Material Handling	High Lift
			With Bolt-on Cutting Edge	With Teeth	With Bolt-on Cutting Edge	With Bolt-on Cutting Edge
						
Capacity	Heaped	yd ³ (m ³)	3.75 (2.8)	3.5 (2.7)	4.0 (3.1)	3.75 (2.8)
	Struck	yd ³ (m ³)	3.3 (2.5)	3.0 (2.3)	3.5 (2.7)	3.3 (2.5)
Maximum dumping clearance		ft-in (mm)	9'3" (2820)	8'11 ¹ / ₂ " (2730)	9' ⁵ / ₈ " (2760)	11'2" (3405)
Dumping reach (to front of bucket edge or tooth)		ft-in (mm)	3'9 ⁷ / ₈ " (1165)	4' ⁷ / ₁₆ " (1230)	4'0" (1220)	4'3" (1300)
Bucket hinge pin height		ft-in (mm)	12'11 ¹¹ / ₁₆ " (3955)	12'11 ¹¹ / ₁₆ " (3955)	12'11 ¹¹ / ₁₆ " (3955)	15' ¹ / ₂ " (4585)
Digging depth		ft-in (mm)	2" (50)	2' ³ / ₄ " (70)	2" (50)	2" (50)
Breakout force		lb (kg)	34,390 (15,600)	37,260 (16,900)	32,190 (14,600)	32,719 (14,840)
Bucket tilt-back angle	at ground level		43°	43°	43°	43°
	at carry position		50°	50°	50°	50°
Overall	Length	ft-in (mm)	25'6 ¹ / ₂ " (7785)	25'11 ³ / ₈ " (7910)	25'9 ⁵ / ₈ " (7865)	27'8" (8435)
	Height	ft-in (mm)	11' ¹⁵ / ₁₆ " (3375)	11' ¹⁵ / ₁₆ " (3375)	11' ¹⁵ / ₁₆ " (3375)	11' ¹⁵ / ₁₆ " (3375)
	Width (outside tire)	ft-in (mm)	8'9 ¹¹ / ₁₆ " (2685)	8'9 ¹¹ / ₁₆ " (2685)	8'9 ¹¹ / ₁₆ " (2685)	8'9 ¹¹ / ₁₆ " (2685)
	Width (outside bucket)	ft-in (mm)	9'2 ¹ / ₄ " (2800)	9'3 ¹ / ₂ " (2830)	9'2 ¹ / ₄ " (2800)	9'2 ¹ / ₄ " (2800)
Wheel base		ft-in (mm)	10'6" (3200)	10'6" (3200)	10'6" (3200)	10'6" (3200)
Minimum turning radius	at outside bucket	ft-in (mm)	20'9 ⁵ / ₈ " (6340)	20'10 ³ / ₄ " (6370)	20'10 ³ / ₈ " (6360)	21'8 ¹ / ₂ " (6620)
	at center of outside tire	ft-in (mm)	17'9 ³ / ₄ " (5430)	17'9 ³ / ₄ " (5430)	17'9 ³ / ₄ " (5430)	17'9 ³ / ₄ " (5430)
Minimum ground clearance		ft-in (mm)	1'6 ¹ / ₈ " (460)	1'6 ¹ / ₈ " (460)	1'6 ¹ / ₈ " (460)	1'6 ¹ / ₈ " (460)
Full articulation angle		degree	40°	40°	40°	40°
Operating weight (with ROPS Cab)		lb (kg)	35,825 (16,250)	35,580 (16,140)	36,000 (16,330)	36,485 (16,550)
Static Tipping Load (with ROPS cab)	Straight	lb (kg)	27,778 (12,600)	28,285 (12,830)	27,600 (12,520)	20,987 (9520)
	Full turn	lb (kg)	23,900 (10,840)	24,385 (11,060)	23,720 (10,760)	17,900 (8120)

The weight and load figure include Enclosed ROPS Cab. 23.5-25-16PR (L-3) tires. Full fuel tank and operator. Measured in accordance with SAEJ732C & J742

Materials and specifications are subject to change without notice and without obligation on the part of the manufacturer. The specifications supplied, while believed to be completely reliable, are not to be taken as warranty for which we assume legal responsibility.

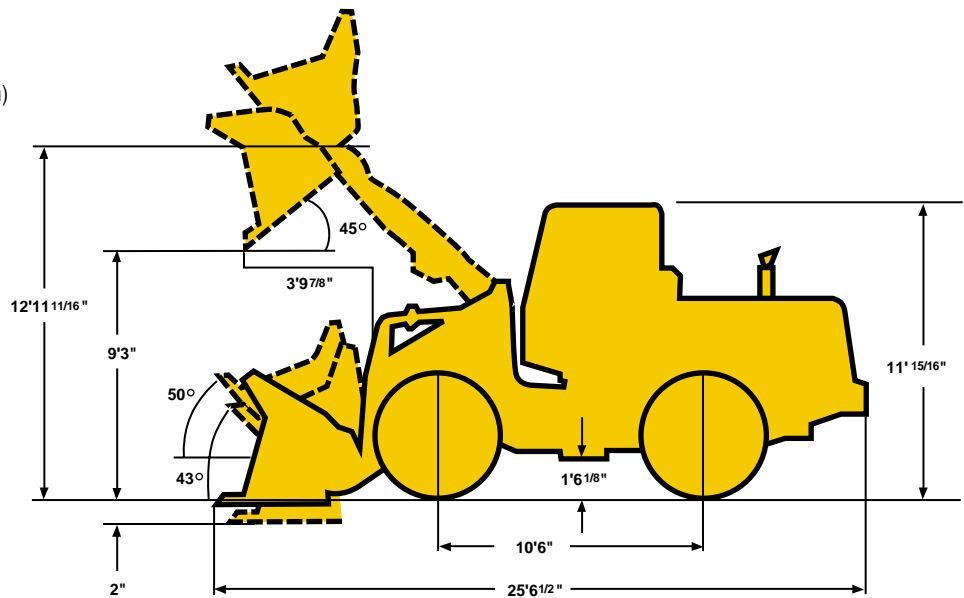
80Z^{IV}-2 OPERATING SPECIFICATIONS

WEIGHTS AND DIMENSIONS (SUPPLEMENTAL DATA)

		Operating Weight	Tipping Load			Overall Width (Outside Tire)	Tread	Vertical Dimensions	Overall Length
			Straight	Full Turn					
ROPS Canopy (Instead of ROPS Cab)	lb (kg)	-440 (-200)	-330 (-150)	-310 (-140)	in (mm)				
Remove ROPS Canopy and Cab (for transport only)	lb (kg)	-1150 (-520)			in (mm)		-6 ⁷ / ₈ " (-175)		
Counterweight	lb (kg)	+595 (+270)	+1335 (+650)	+1190 (+540)	in (mm)				
Tires: 23.5-25-12PR (L-2)	lb (kg)	-445 (-200)	-335 (-150)	-285 (-130)	in (mm)				
20.5-25-16PR (L-2)	lb (kg)	-1985 (-900)	-1520 (-690)	-1345 (-610)	in (mm)	-1 ⁹ / ₁₆ " (-40)	+1 ⁹ / ₁₆ " (+40)	-2 ³ / ₁₆ " (-60)	+1 ¹⁵ / ₁₆ " (+50)
20.5-25-16PR (L-3)	lb (kg)	-1764 (-800)	-1355 (-615)	-1190 (-540)	in (mm)	-1 ⁹ / ₁₆ " (-40)	1 ⁹ / ₁₆ " (+40)	-2 ³ / ₁₆ " (-60)	+1 ¹⁵ / ₁₆ " (+50)
20.5-25-16PR (L-2) with 75% CaCl ₂	lb (kg)	-190 (-85)	-290 (-130)	-255 (-115)	in (mm)	-1 ⁹ / ₁₆ " (-40)	1 ⁹ / ₁₆ " (+40)	-2 ³ / ₁₆ " (-60)	+1 ¹⁵ / ₁₆ " (+50)
20.5-25-16PR (L-3) with 75% CaCl ₂	lb (kg)	-35 (-15)	-45 (-20)	-45 (-20)	in (mm)	-1 ⁹ / ₁₆ " (-40)	1 ⁹ / ₁₆ " (+40)	-2 ³ / ₁₆ " (-60)	+1 ¹⁵ / ₁₆ " (+50)
Air conditioner	lb (kg)	+220 (+100)	+200 (+90)	+150 (+70)	in (mm)				
Belly Guard (rear frame)	lb (kg)	+120 (+55)	+90 (+40)	+90 (+40)	in (mm)				

Base Tire 23.5-25-16PR (L-3)

Tread 6'9¹/₈" (2060mm)
 Width (outside tire) 8'9¹/₁₆" (2685mm)
 Width (outside bucket) 9'2¹/₄" (2800mm)
 Equipped with GSC bucket with bolt on cutting edge
 23.5-25-16PR (L-3) Tire and ROPS Cab



80Z_{IV}-2 OPERATING SPECIFICATIONS

ENGINE

Make/Model/Fuel Type	Cummins C-8.3-C/Diesel
Type	4-cycle, watercooled, turbocharged, direct injection
Horsepower rating at flywheel	178HP/2200 RPM
Maximum torque	557 ft/lb (77 kgm)/1500 RPM
Number of cylinders	6
Bore and stroke	4.49" x 5.32" (114mm x 135mm)
Total displacement	504.5 in3 (8268 cm3)
Alternator	AC24V-1.68kw (70amp)
Starting motor	24V-7.3kw (10HP)
Battery	12V-150AH, 2 units (cold cranking amps)
Governor	All-speed, mechanical type

TORQUE CONVERTER AND TRANSMISSION

Torque converter	3 elements, single stage
Torque stall ratio	3.15:1
Main clutches	Wet hydraulic, multi-disc type
Cooling method	Forced circulation type
Transmission	Full powershift, 4 forward, 4 reverse with automatic mode (2nd-4th) with downshift switch for 2nd-1st downshifting
Speeds	Forward
	1st: 4.5 MPH (7.3 km/hr) 2nd: 7.6 MPH (12.3km/hr) 3rd: 13.6 MPH (21.9 km/hr) 4th: 21.7 MPH (35.0 km/hr)
Speeds	Reverse
	1st: 4.7 MPH (7.5 km/hr) 2nd: 7.8 MPH (12.5 km/hr) 3rd: 13.8 MPH (22.4 km/hr) 4th: 22.0 MPH (35.5 km/hr)

SERVICE REFILL CAPACITY

LOCATION	CAPACITY:	Gallons	Liters
Engine (coolant)		14.5	(55)
Fuel tank (diesel fuel)		63.4	(240)
Engine oil (oil pan)		6.6	(25)
Front axle (gear oil)		14.5	(55)
Rear axle (gear oil)		14.5	(55)
Steering box		0.1	(0.4)
Torque converter and transmission (engine oil)		11.9	(45)
Hydraulic system including tank (hydraulic oil)		38.3	(145)
Brake oil tank (engine oil)		1.3	(5.1)

HYDRAULIC AND STEERING SYSTEM

Steering type	Articulated frame steering	
Steering mechanism	Hydraulic power steering unit, mechanical follow-up	
Lift (boom) cylinder	Two (2) double-acting piston type: 5.9" x 31.0" (150mm x 788mm)	
Tilt (bucket) cylinder	One (1) double-acting piston type: 7.1" x 20.6" (180mm x 523mm)	
Steering cylinder	Two (2) double-acting piston type: 3.1" x 15.9" (80mm x 405mm)	
Steering oil pump	Gear type: 47 GPM @ 2200 RPM (178 LPM @ 2200 RPM)	
Main oil pump	Gear type: 17.2 GPM @ 2200 RPM (65 LPM @ 2200 RPM)	
Pilot oil pump	Gear type: 13.5 GPM @ 2200 RPM (51 LPM @ 2200 RPM)	
Relief valve set pressure	Loading	3000 psi (210 kg/cm2)
	Steering	3000 psi (210 kg/cm2)
HYDRAULIC CYCLE TIME*		
Lifting time (at full load)	6.2 sec.	
Lowering time (empty)	3.4 sec.	
Bucket dumping time	1.4 sec.	
TOTAL	11.0 sec.	

* Measured in accordance with SAE J732C

AXLE SYSTEM

Drive system	4-wheel drive	
Front and rear axle	Full floating banjo type	
Tires	Standard	23.5 x 25-16PR (L-3)
	Optional	20.5 x 25-16PR (L-2) (L-3) 23.5 x 25-16PR (L-2)
Reduction and differential gear	Spiral bevel/gear, 1 stage reduction, torque proportioning type	
Final reduction gear	Outboard mounted, internal planetary gear	
Oscillation angle	±12° (total ±24°)	

BRAKE SYSTEM

Service brakes	4 wheel air over hydraulic wet disc brakes, Dual circuit
Parking/Emergency brake	Spring applied air release type, located in front driveline. Meets MSHA requirements

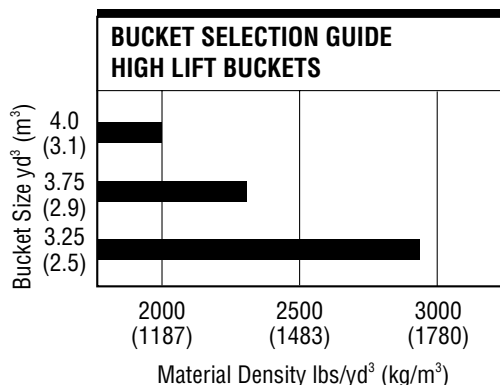
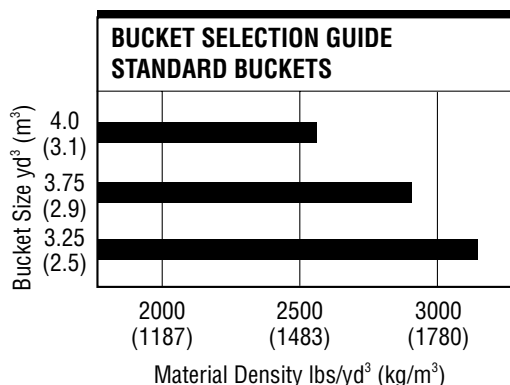
80Z^{IV-2} EQUIPMENT DATA

STANDARD EQUIPMENT

Adjustable Steering Column Air Cleaner (Double Element Donaldson) Air Conditioner (R134 Refrigerant) Alarms (Audible): Air Master Overstroke Air Pressure Brake Oil Level Engine Oil Pressure Alarms (Visual): Air Filter Air Master Overstroke Air Pressure Battery Discharge Brake Oil Level Converter Oil Temperature Engine Oil Pressure Engine Coolant Temperature Parking Brake Alternator (65 amp) AM/FM Cassette Radio Batteries: 12V-150AH (2 units) Brake Line Protection (Front)	Brake (Parking) Spring applied; Air released, Drum type Brakes (Service) Oil/Air Actuation Enclosed Wet Disc Dual System Bucket Control Lever Dual, Pilot Assisted Bucket Leveler Boom Kickout Coat Hook Cold Start Aid Cup Holder Downshift Button Drawbar Electrical System (24 volt) Engine Coolant Expansion Tank Fan (Blower) Fenders (Front and Rear) Gauges: Air Pressure Converter Oil Temperature Engine Coolant Temperature Fuel Level	Hour Meter Hydraulic Oil Level Tachometer Heater/Pressurizer (40,000 BTU) Hoodsides (Hinged) Horn (Electric) Hydraulic Oil Cooler Indicators: High Beam Parking Brake Transmission Declutch Transmission Shift Monitor Working Light Linkage (Z-type, Sealed) Lights: 4 Front 2 Rear 2 Stop/Tail 2 Backup Muffler Neutral Safety Start Operator's Manual Box Radiator: Heavy Duty Plate Fin Type	Radiator Grille, Hinged Reverse Alarm ROPS Cab: Enclosed cab with sound suppression, front lights, front and rear wipers and washers, one rear view and two side mirrors, tinted glass, sliding side windows, and rear light Safety Articulation Locking Bar Seat (super deluxe, adjustable suspension, headrest and adjustable arm rests) Seat Belt, Retractable, 3" wide Shift Control Unit for Automatic Shift Torque Proportioning Differentials Transmission Declutch Selector Switch Vandalism Protection Wiper, Front Intermittent Wrist Rest, Adjustable
---	--	--	---

OPTIONAL EQUIPMENT

Air Dryer Belly Guard, Hinged Bolt-On Cutting Edge Segments Bucket Teeth Counterweight	Cushion Dump Valve Easy Clean Radiator Side-by-Side Emergency Steering Engine Pre-Cleaner High Lift Arm	Hydraulic System, 3-Spool Valve Lighting System No Spin Differential Quick Coupler and Attachments	Ride Control ROPS Canopy Seat, Air Ride Single Lever Hydraulic Control Turn Signal With Four-Way Flasher
--	--	---	--



KAWASAKI LOADERS

More Than A Machine, A Complete Solution

Kawasaki Construction Machinery Corp. of America, a division of Kawasaki Heavy Industries, is a leading supplier of a full range of high quality wheel loaders. In fact, Kawasaki is the oldest on-going manufacturer of articulated, rubber-tired wheel loaders in the world. With over 35 years of proven performance history, Kawasaki wheel loaders have continuously evolved to bring you the best in equipment and support services, backed by a carefully selected dealer network.

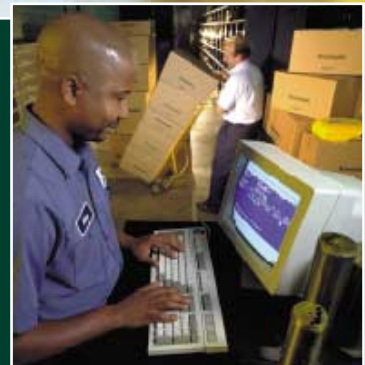
Kawasaki articulated wheel loaders incorporate innovative design features coupled with extensive knowledge and experience gained from real-world applications. Kawasaki pioneered Z-Link design to provide unmatched utility, high breakout force and efficiency in its machines. Powered by proven emissions-compliant Cummins diesel engines, durability and serviceability are designed into every Kawasaki loader.

Kawasaki loaders are assembled at the company's modern facilities in Newnan, GA. Service and support operations are headquartered in Kennesaw, GA.

A state-of-the-art parts distribution system links dealers with the main parts warehouse, allowing them to order parts directly. Qualified craftsmen rebuild components for all Kawasaki models at our fully-equipped rebuild center, making component exchange easier and faster. An independent oil analysis program allows monitoring of critical systems to reduce unscheduled downtime.



The independent dealers that represent and support Kawasaki loaders are experts in their markets and are dedicated to providing you with the best service available. Together, we are committed to making your investment in a Kawasaki loader a sound business decision that will pay dividends for years to come.



 **Kawasaki**
KAWASAKI CONSTRUCTION MACHINERY
CORP. OF AMERICA

2140 Barrett Park Drive • Suite 101
P.O. Box 1657
Kennesaw, Georgia 30144
Tel: 770-499-7000
Fax: 770-421-6842
www.kawasakiloaders.com

