

ONE FOCUS.
COMPLETE
SOLUTIONS



85Z^V

 **Kawasaki**



RUGGED AND DEPENDABLE

85Z^v

A COMPLETE SOLUTION

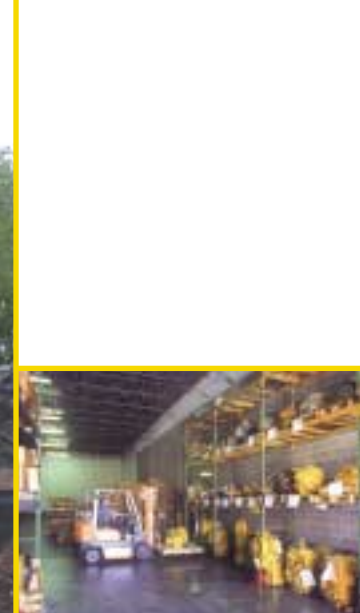
- Emissions-compliant 235 HP Cummins diesel engine
- 4.4 to 5.2 cu. yard bucket available
- Accepts a wide assortment of attachments to handle many jobs
- Increased width of cab by 20% for operator comfort
- Ride Control option provides stable load handling
- Single hydraulic control option for easy operation
- Automatic powershift transmission with four forward and reverse speeds
- Outboard-mounted, four-wheel, dual circuit sealed wet disc brakes for reliability and long service life
- Torque-proportioning differentials for longer brake and tire life
- Easy access to drains, filters and fittings
- Transmission redesigned with helical gears, reducing noise level and vibration
- Engine cooling system with hydraulic fan for efficient cooling

THE POWER TO PERFORM!

The **85Z** loader is a versatile, high productivity wheel loader for a wide range of applications from asphalt and concrete plants to road construction. Featuring a Cummins QSL9 diesel engine producing 235 flywheel horsepower, a 4.8 cu. yard bucket, a certified ROPS cab and a host of other features that provide high operating efficiency, ease of maintenance and safety, the **85Z** is always ready for the heavy duty jobs.

OPERATOR PRODUCTIVITY AND SAFETY

The **85Z** features a completely redesigned ROPS cab with an operator's compartment that offers unmatched comfort and is designed to maximize efficiency and productivity. The cab is accessible by ladders on both sides, features a gasket-mounted flat tinted glass windshield, has front and rear wipers and includes many other features which contribute to improved safety, visibility and comfort. The **85Z** comes standard with an AM/FM cassette player, air-ride seat, and a 27,000 BTU air conditioner.



Kawasaki and their dealer organization offer comprehensive support and service programs designed to keep you on the job.

PUTTING THE **852** TO WORK

Like all Kawasaki loaders, the **852** has a 40-year heritage of strength and reliability. Dual lever hydraulic control with a single lever option and single twist-grip transmission control offer ease of operation.

The **852** is available with a 4.8 cubic yard bucket with a bolt-on cutting edge. A third spool valve, control lever, linkage and line are available to handle a number of attachments and extend the **852**'s versatility. Other buckets, Quick Couplers and attachments are also available.

The outboard-mounted, four-wheel sealed wet disc brakes are designed for long life and easy access and overhaul. Standard spin-on filters, remote mounted grease fittings and oil drain simplify maintenance. The standard 26.5-25-20PR (L-3) tires and optional 23.5-25-16PR (L-3) and 26.5-25-20PR (L-2, L-5) tires use heavy duty three-piece rims for easy servicing in the field.

UNMATCHED SUPPORT

Kawasaki maintains a large inventory of new components to ensure outstanding parts availability and minimal downtime. In addition, a predictive oil analysis program helps eliminate unnecessary maintenance and helps find problems before they occur. Kawasaki also stocks an array of cost-effective rebuilt components.



BUILT TO STAY ON THE JOB

Kawasaki loaders are designed with the durability to provide years of service. Backed by a dealer network of heavy equipment experts and a dedicated support staff in the Kawasaki parts and service organization, your investment in a Kawasaki loader is an excellent choice that will pay dividends for years to come.



POWER AND PERFORMANCE PROVIDE UNMATCHED PRODUCTIVITY

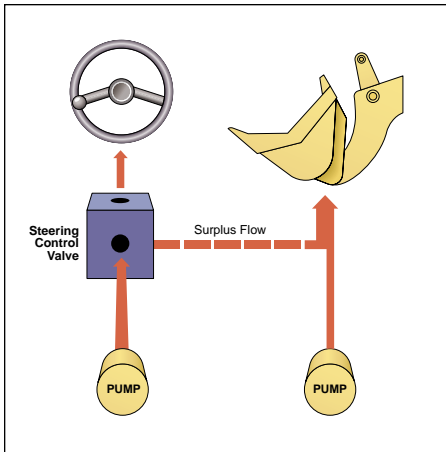


The Kawasaki **852** means business. It incorporates the best in design and technology, giving your operators the tool they need to get the job done.

Because Kawasaki specializes in the design and manufacture of articulated wheel loaders, you get a machine with a 40-year heritage of successful innovations. The power and productivity that the **852** brings to the job is a result of that experience.

WORLD-CLASS ENGINES

- 235 HP emissions-compliant Cummins QSL9 diesel
- Complies with tough Tier 2 emissions standards
- Engineered for longer service life
- Reliable and fuel efficient
- Extensive distribution system
- 24 volt battery system for reserve power
- Turbocharger with aftercooler



HIGH EFFICIENCY HYDRAULIC SYSTEM

- Dry, reliable
- Cast iron gear pumps
- Energy efficient, steering circuit supplements main
- Easy access to two-spool control valve
- Large oil reservoir keeps oil cooler



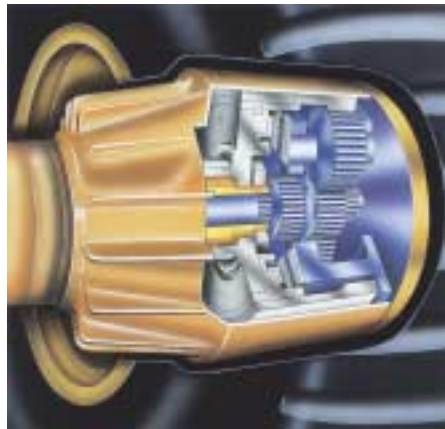
TRANSMISSION

- Automatic transmission selects optimum speed from second to fourth gear
- Single lever control
- Switch activates transmission declutch on right and left brake pedals
- Downshift button speeds cycle times and reduces operator fatigue
- Helical gears reduce noise and vibration



AXLES/BRAKES

- Heavy-duty torque proportioning differential
- 26.5-25-20PR (L-3) tires standard
- 23.5-25-16PR (L-3) 26.5-25-20PR (L-2, L-5) tires available
- 750/65R25 XLD (L-3) low profile tires available
- 3-piece rims standard
- Outboard-mounted, four-wheel, dual-circuit wet disc brakes
- Easy maintenance
- High capacity
- Long life



LIFT ARMS/BUCKETS

- Z-linkage
- High breakout force
- Optional high lift arms available
- 4.4 to 5.2 cu. yard bucket
- Easy loading
- Excellent load retention
- Full assortment of edges and teeth
- Complete array of attachments available
- Bolt-on heel plates extend bucket life
- Bucket leveler and boom kick-out standard



STRONG, RUGGED BOX FRAME

- Massive center pins and bearings
- High strength loader tower
- Heavy box frame rear chassis

THE COMFORT ZONE



Kawasaki has taken a from-the-ground-up approach to create a cab designed with the operator in mind. The cab focuses on providing the ultimate environment for productivity, comfort and safety. The high visibility, quiet, temperature controlled cab offers the operator ideal surroundings for putting the Kawasaki loader through its paces.

85² Features

- Flat glass windows for easy replacement
- Cab offers easy entry from either side
- Sliding side windows
- Automotive door locks
- Halogen headlights improve nighttime visibility
- Reduced noise level
- Cab interior increased 20% in size for operator comfort
- Telescoping and tilting steering wheel
- Flooring configuration reduces sound levels and allows easy cleaning
- Increased storage
- Climate controlled storage box for food & beverage storage

Standard Features

- Air Ride Seat
- All systems monitored with lights and alarms
- Single twist grip transmission lever redesigned for easy gripping and smoother shifting
- Dual, pilot-assisted hydraulic controls—fingertip control
- 27,000 BTU Air Conditioner
- Adjustable wrist rest
- One rearview and two side mirrors
- AM/FM cassette radio
- Rear lights added to ROPS cab
- Viscous isolation-mounted to reduce vibration
- Personal storage space and coat hook
- 40,000 BTU heater
- Cold start feature
- Pressurized air control
- Switch activates transmission declutch on both brake pedals
- Front and rear wipers and washers
- Intermittent front wiper

Options

- Single lever hydraulics
- Turn signal with 4-way flasher



EASY ACCESS SIMPLIFIES SERVICING

- Engine side covers open wide for optimum access
- Filters positioned within easy reach
- Easy access to drains, filters and fittings
- Grease fittings are grouped for easy lubrication
- Readily available Fleetguard and Donaldson filters
- Starters and alternators available through Cummins national distribution network
- 3-piece wheel rims standard for easy field service
- Cooling system engineered to allow easy access to radiator and hydraulic coolers from side compartments
- Ladders on both sides of the machine
- Pressurized air control reduces dust in cab
- Trunnion grease fittings located near axle
- Sealed universal joints (only require greasing at 2000 hour intervals)
- Electric wiring color-coded and numbered for ease of service
- Deutsch electric connectors throughout wiring harness



OPTIONS

QUICK COUPLER ATTACHMENT

The JRB Quick Coupler, can be used in conjunction with a variety of attachments, including:

- General and multi-purpose buckets
- Side dump bucket
- Construction utility forks
- Utility pallet forks
- Extendable boom
- Paddle top clamp forks
- Grapple bucket
- Loader rake and loader rake with hydraulic clamps



K-LINK

- On demand reports provide machine location, hours, operating status
- Alarm notification by phone or pager can indicate equipment failure, geo-fence break
- Worldwide satellite coverage
- Customize reports and alerts
- Internet access to all reports and alerts

SINGLE-LEVER HYDRAULIC CONTROL

- Faster cycle times
- Ease of operation
- Increases operator efficiency



RIDE CONTROL

- Stable load handling
- Reduces operator fatigue
- Cuts vibration and equipment wear
- Improves safety and productivity
- Less spillage
- Faster travel speed

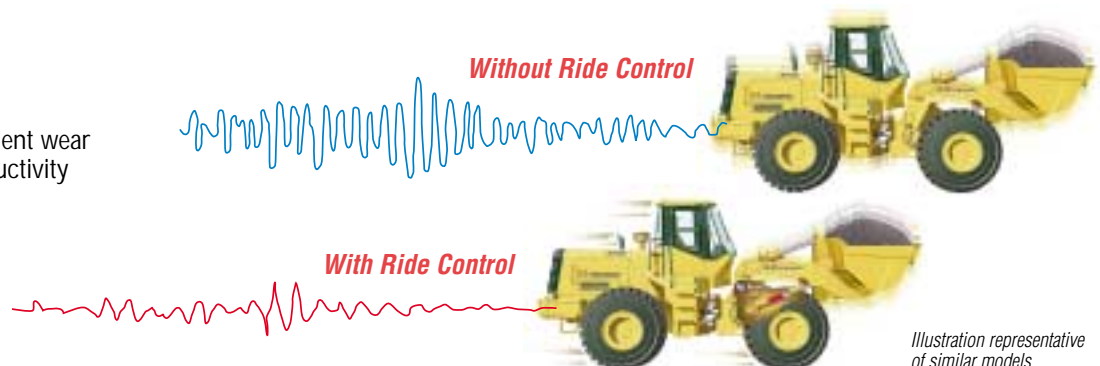
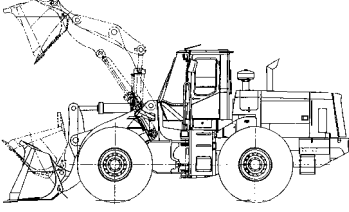
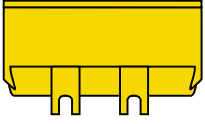
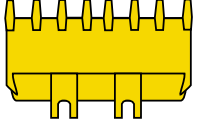
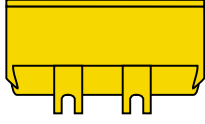
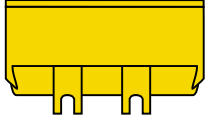


Illustration representative of similar models.

BUCKET DATA

			Standard Boom			High Lift Boom
			General Purpose Bucket With Bolt-on Cutting Edge	General Purpose Bucket With Teeth	Material Handling Bucket With Bolt-on Cutting Edge	General Purpose Bucket With Bolt-on Cutting Edge
						
Capacity	Heaped	yd ³ (m ³)	4.8 (3.7)	4.4 (3.4)	5.2 (4.0)	4.1 (3.1)
	Struck	yd ³ (m ³)	4.3 (3.3)	3.7 (2.9)	4.5 (3.5)	3.4 (2.6)
Maximum dumping clearance		ft-in (mm)	10'5 ⁵ / ₈ " (3190)	10'1 ¹ / ₄ " (3055)	10'2 ¹³ / ₁₆ " (3120)	12'2 ¹ / ₄ " (3715)
Dumping reach (to front of bucket edge or tooth)		ft-in (mm)	3'4 ³ / ₈ " (1025)	3'8 ¹ / ₂ " (1130)	3'7 ¹ / ₈ " (1095)	3'1 ⁷ / ₁₆ " (950)
Bucket hinge pin height		ft-in (mm)	14'1 ⁵ / ₈ " (4310)	14'1 ⁵ / ₈ " (4310)	14'1 ⁵ / ₈ " (4310)	14'1 ⁵ / ₈ " (4310)
Digging depth		ft-in (mm)	2 ³ / ₈ " (60)	3 ¹ / ₈ " (80)	2 ³ / ₈ " (60)	2 ³ / ₈ " (60)
Breakout force		lb (kg)	40,680 (18,450)	43,480 (19,720)	37,620 (17,060)	41,450 (18,800)
Bucket tilt-back angle	at ground level		42.5°	42.5°	42.5°	41°
	at carry position		50°	50°	50°	48°
Overall	Length	ft-in (mm)	26'7 ⁷ / ₈ " (8145)	27'3 ⁹ / ₁₆ " (8320)	27'5 ⁵ / ₈ " (8245)	27'9 ¹ / ₁₆ " (8460)
	Height	ft-in (mm)	11'7 ³ / ₁₆ " (3535)	11'7 ³ / ₁₆ " (3535)	11'7 ³ / ₁₆ " (3535)	11'7 ³ / ₁₆ " (3535)
	Width (outside tire)	ft-in (mm)	9'7 ³ / ₈ " (2930)	9'7 ³ / ₈ " (2930)	9'7 ³ / ₈ " (2930)	9'7 ³ / ₈ " (2930)
	Width (outside bucket)	ft-in (mm)	10'2 ¹ / ₁₆ " (3100)	10'3 ¹ / ₄ " (3130)	10'2 ¹ / ₁₆ " (3100)	10'2 ¹ / ₁₆ " (3100)
Wheel base		ft-in (mm)	10'9 ⁷ / ₈ " (3300)	10'9 ⁷ / ₈ " (3300)	10'9 ⁷ / ₈ " (3300)	10'9 ⁷ / ₈ " (3300)
Minimum turning radius	at outside bucket	ft-in (mm)	21'9 ³ / ₈ " (6635)	21'11 ³ / ₄ " (6700)	21'7 ¹³ / ₁₆ " (6660)	21'7 ¹ / ₁₆ " (6605)
	at center of outside tire	ft-in (mm)	18'6 ¹ / ₂ " (5650)	18'6 ¹ / ₂ " (5650)	18'6 ¹ / ₂ " (5650)	18'6 ¹ / ₂ " (5650)
Minimum ground clearance		ft-in (mm)	1'8 ¹ / ₂ " (520)	1'8 ¹ / ₂ " (520)	1'8 ¹ / ₂ " (520)	1'8 ¹ / ₂ " (520)
Full articulation angle		degree	40°	40°	40°	40°
Operating weight (with ROPS Cab)		lb (kg)	45,840 (20,790)	45,535 (20,650)	46,105 (20,910)	46,105 (20,910)
Static Tipping Load (with ROPS cab)	Straight	lb (kg)	34,925 (15,840)	35,300 (16,010)	34,685 (15,730)	29,545 (13,400)
	Full turn	lb (kg)	29,920 (13,570)	30,250 (13,720)	29,700 (13,470)	25,315 (11,480)

* The weight and load figure includes optional counterweight, enclosed ROPS Cab, air conditioner, 26.5-25-20PR (L-3) tires, and full fuel tank and operator.

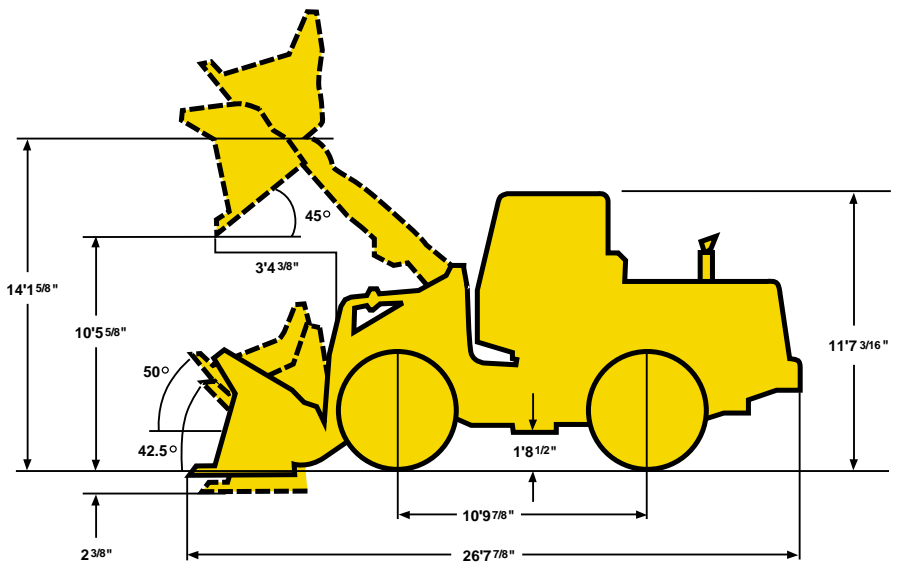
Materials and specifications are subject to change without notice and without obligation on the part of the manufacturer. The specifications supplied, while believed to be completely reliable, are not to be taken as warranty for which we assume legal responsibility.

WEIGHTS AND DIMENSIONS (SUPPLEMENTAL DATA)

	Operating Weight	Tipping Load		Overall Width (Outside Tire)	Tread	Vertical Dimensions	Overall Length	
		Straight	Full Turn					
Remove ROPS Cab (for transport only)	lb (kg)	-1100 (-500)	-950 (-430)	-820 (-370)	in (mm)			
Remove Optional Counterweight	lb (kg)	-770 (-350)	-1895 (-860)	-1610 (-730)	in (mm)			
Tires: 23.5-25-16PR (L-2)	lb (kg)	-1785 (-810)	-1280 (-580)	-1100 (-500)	in (mm)	-3 ³ / ₈ " (-85)	-2 ³ / ₈ " (-60)	+2" (+50)
23.5-25-16PR (L-4)	lb (kg)	-465 (-210)	-330 (-150)	-285 (-130)	in (mm)	-3 ³ / ₈ " (-85)	-2 ³ / ₈ " (-60)	+2" (+50)
23.5-25-16PR (L-5)	lb (kg)	+595 (+270)	+440 (+200)	+375 (+170)	in (mm)	-3 ³ / ₈ " (-85)	-2 ³ / ₈ " (-60)	+2" (+50)
23.5-25-16PR (L-3)	lb (kg)	-1435 (-650)	-1035 (-470)	-880 (-400)	in (mm)	-3 ³ / ₈ " (-85)	-2 ³ / ₈ " (-60)	+2" (+50)
26.5-25-20PR (L-4)	lb (kg)	+615 (+280)	+440 (+200)	+375 (+170)	in (mm)			
26.5-25-20PR (L-5)	lb (kg)	+2225 (+1010)	+1610 (+730)	+1365 (+620)	in (mm)			
23.5-25-16PR (L-3) with 75% CaCl ₂ for logging	lb (kg)	+950 (+430)	+2515 (+1140)	+2160 (+980)	in (mm)			
26.5-25-20PR (L-3) with 75% CaCl ₂ for logging	lb (kg)	+3220 (+1460)	+4805 (+2180)	+4125 (+1870)	in (mm)			
Air conditioner — Deletion	lb (kg)	-220 (-100)	-175 (-80)	-155 (-70)	in (mm)			
Belly Guard (rear frame)	lb (kg)	+220 (+100)	+420 (+190)	+355 (+160)	in (mm)			

Base Tire 26.5-25-20PR (L-3)

Tread 7'3³/₄" (2230mm)
 Width (outside tire) 9'7³/₈" (2930mm)
 Width (outside bucket) 10'2¹/₁₆" (3100mm)
 Equipped with GSC bucket with bolt on cutting edge
 26.5-25-20PR (L-3) Tire and ROPS Cab



ENGINE	
Make/Model/Fuel Type	Cummins/QLS9/Diesel
Type	4-cycle, watercooled, in-line direct injection type with turbo charger and air-cooled intercooler
Net flywheel horsepower	235HP/2200 RPM
Maximum torque	738 ft/lb @ 1350 RPM
Number of cylinders	6
Bore and stroke	4.99" x 5.69" (114mm x 144.5mm)
Total displacement	540 in ³ (8850 cm ³)
Alternator	AC24V – 1700W (70 amp)
Starting motor	24V – 7.3kw (9.8HP)
Battery	12V – 150AH, 2 units
Governor	All-speed, electrical type

TORQUE CONVERTER AND TRANSMISSION	
Torque converter	3 elements, single stage
Torque stall ratio	3.42:1
Main clutches	Wet hydraulic, multi-disc type
Cooling method	Forced circulation type
Transmission	Full powershift, 4 forward, 4 reverse with automatic mode (2nd – 4th) with downshift switch for 2nd – 1st downshifting
Speeds	Forward
	1st: 4.8 MPH (7.8 km/hr) 2nd: 8.1 MPH (13.1 km/hr) 3rd: 13.7 MPH (22.0 km/hr) 4th: 22.2 MPH (35.8 km/hr)
Speeds	Reverse
	1st: 5.0 MPH (8.1 km/hr) 2nd: 8.4 MPH (13.5 km/hr) 3rd: 14.0 MPH (22.6 km/hr) 4th: 22.7 MPH (36.5 km/hr)

SERVICE REFILL CAPACITY			
LOCATION	CAPACITY:	Gallons	Liters
Engine (coolant)		15.3	(58.0)
Fuel tank (diesel fuel)		79.3	(300.0)
Engine oil (oil pan)		7.1	(27.0)
Front axle (gear oil)		19.6	(74.0)
Rear axle (gear oil)		21.1	(80.0)
Torque converter and transmission (engine oil)		10.0	(38.0)
Hydraulic system including tank (hydraulic oil)		55.5	(210)

HYDRAULIC AND STEERING SYSTEM		
Steering type	Articulated frame steering	
Steering mechanism	Hydraulic power steering unit, pilot operated type	
Lift (boom) cylinder	Two (2) double-acting piston type: 6.3" x 33.86" (160mm x 860mm)	
Tilt (bucket) cylinder	One (1) double-acting piston type: 7.48" x 21.42" (190mm x 544mm)	
Steering cylinder	Two (2) double-acting piston type: 3.54" x 17.32" (90mm x 440mm)	
Steering oil pump	Gear type: 60.6 GPM/1000psi @ 2200 RPM (229.5 LPM/70kg/cm ² @ 2200 RPM)	
Main oil pump	Gear type: 22.5 GPM/1000psi @ 2200 RPM (85.2 LPM/70kg/cm ² @ 2200 RPM)	
Pilot oil pump	Gear type: 26.9 GPM/1000psi @ 2200 RPM (101.7 LPM/70kg/cm ² @ 2200 RPM)	
Relief valve set pressure	Loading	3000 psi (210 kg/cm ²)
	Steering	3000 psi (210 kg/cm ²)
HYDRAULIC CYCLE TIME*		
Lifting time (at full load)	6.5 sec.	
Lowering time (empty)	4.2 sec.	
Bucket dumping time	1.4 sec.	
TOTAL	12.1 sec.	

* Measured in accordance with SAE J732C

AXLE SYSTEM		
Drive system	4-wheel drive	
Front and rear axle	Full floating banjo type	
Tires	Standard	26.5 x 25-20PR (L-3)
	Optional	23.5 x 25-16PR (L-2) (L-3) (L-4) (L-5) 26.5 x 25-20PR (L-2) (L-4) (L-5)
Reduction and differential gear	Spiral bevel/gear, 1 stage reduction, torque proportioning type	
Final reduction gear	Outboard mounted, internal planetary gear	
Oscillation angle	±11° (total 22°)	

BRAKE SYSTEM	
Service brakes	4 wheel, adjustment free, wet multiple disk brake. Controlled by full hydraulic system Dual circuit.
Parking/Emergency brake	Spring applied oil release type. Meets MSHA requirements

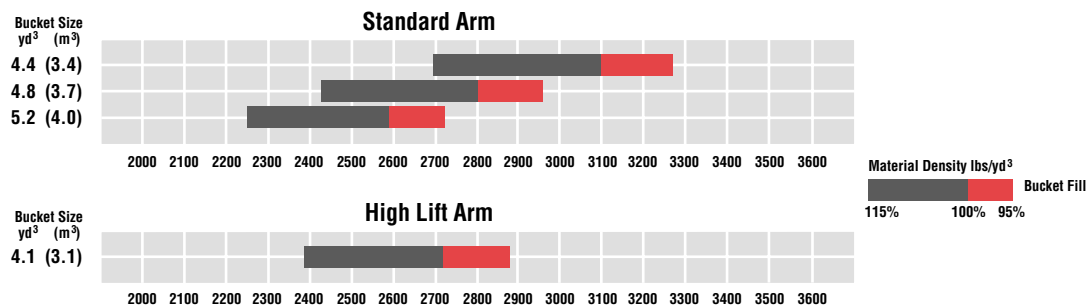
STANDARD EQUIPMENT

<p>Air Cleaner (Double Element Donaldson with Precleaner)</p> <p>Air Conditioner</p> <p>Alarms (Audible): Brake Oil Pressure Engine Oil Pressure</p> <p>Alarms (Visual): Air Filter Battery Discharge Brake Oil Pressure Converter Oil Temperature Engine Oil Pressure Engine Coolant Temperature Parking Brake</p> <p>Alternator (70 amp)</p> <p>AM/FM Cassette Radio</p> <p>Batteries: 12V-150AH (2 units)</p> <p>Bellyguard Engine</p> <p>Brake Line Protection (Front)</p> <p>Brake (Parking) Spring applied; Oil pressure released, Drum type</p>	<p>Brakes (Service) Enclosed Wet Disc, Dual System Full Hydraulic System</p> <p>Bucket Control Lever Dual, Pilot Assisted</p> <p>Bucket Leveler</p> <p>Boom Kickout</p> <p>Coat Hook</p> <p>Cold Start Aid</p> <p>Cup Holder</p> <p>Downshift Button</p> <p>Drawbar</p> <p>Electrical System (24 volt)</p> <p>Fenders (Front and Rear)</p> <p>Gauges: Converter Oil Temperature Engine Coolant Temperature Fuel Level Hour Meter Hydraulic Oil Level Tachometer</p>	<p>Heater/Pressurizer (40,000 BTU)</p> <p>Hoodsides (Hinged)</p> <p>Horn (Electric)</p> <p>Hydraulic Fan (Blower)</p> <p>Indicators: High Beam Parking Brake Transmission Declutch Transmission Shift Monitor Working Light</p> <p>Linkage (Z-type, Sealed)</p> <p>Lights: 2 Headlights (Halogen) Working Lights 4 Front 4 Rear 2 Stop/Tail 2 Backup</p> <p>Muffler</p> <p>Neutral Safety Start</p> <p>Operator's Manual Box</p>	<p>Radiator: Heavy Duty Plate Fin Type</p> <p>Radiator Grille, Hinged</p> <p>Reverse Alarm</p> <p>ROPS Cab: Enclosed cab with sound suppression, front lights, front and rear wipers and washers, one rear view and two side mirrors, tinted glass, sliding side windows, and rear lights</p> <p>Safety Articulation Locking Bar</p> <p>Seat, Air Ride</p> <p>Seat Belt, Retractable, 3" wide</p> <p>Shift Control Unit for Automatic Shift</p> <p>Telescopic and Tilt Steering</p> <p>Torque Proportioning Differentials</p> <p>Transmission Declutch Selector Switch</p> <p>Vandalism Protection</p> <p>Wrist Rest, Adjustable</p>
--	---	--	--

OPTIONAL EQUIPMENT

<p>Belly Guard, Hinged Transmission</p> <p>Bolt-On Cutting Edge Segments</p> <p>Bucket Teeth</p>	<p>Converter 12v</p> <p>Counterweight, Bucket</p> <p>Cushion Dump Valve</p> <p>Emergency Steering</p> <p>High Lift Arm</p>	<p>Hydraulic System, 3-Spool Valve</p> <p>K-Link</p> <p>No Spin Differential</p> <p>Quick Coupler and Attachments</p>	<p>Radiator, Wide Fin Spacing</p> <p>ROPS Canopy</p> <p>Single Lever Hydraulic Control</p> <p>Turn Signal with Four-Way Flasher</p>
--	--	---	---

BUCKET SELECTION CHARTS



KAWASAKI LOADERS

More Than A Machine, A Complete Solution

Kawasaki Construction Machinery Corp. of America, a division of Kawasaki Heavy Industries, is a leading supplier of a full range of high quality wheel loaders. In fact, Kawasaki is the oldest on-going manufacturer of articulated, rubber-tired wheel loaders in the world. Since 1962, Kawasaki wheel loaders have continuously evolved to bring you the best in equipment and support services, backed by a carefully selected dealer network.

Kawasaki articulated wheel loaders incorporate innovative design features coupled with extensive knowledge and experience gained from real-world applications. Kawasaki pioneered Z-Link design to provide unmatched utility, high breakout force and efficiency in its machines. Powered by proven emissions-compliant Cummins diesel engines, durability and serviceability are designed into every Kawasaki loader.

Kawasaki loaders are assembled at the company's modern facilities in Newnan, GA. Service and support operations are headquartered in Kennesaw, GA.

A state-of-the-art parts distribution system links dealers with the main parts warehouse, allowing them to order parts directly. Qualified craftsmen rebuild components for all Kawasaki models at our fully-equipped rebuild center, making component exchange easier and



faster. An independent oil analysis program allows monitoring of critical systems to reduce unscheduled downtime.

The independent dealers that represent and support Kawasaki loaders are

experts in their markets and are dedicated to providing you with the best service available. Together, we are committed to making your investment in a Kawasaki loader a sound business decision that will pay dividends for years to come.



2140 Barrett Park Drive • Suite 101
Kennesaw, Georgia 30144
Tel: 770-499-7000 • Fax: 770-421-6842
www.kawasakiloaders.com

